

# Myanmar OSH-profile

**Ministry of Labour, Immigration and Population  
Factories and General Labour Laws Inspection Department  
Myanmar**



# **Contents**

- 1. Overview of Myanmar OSH System**
- 2. Functions of Factories and General Labour Laws Inspection Department**
- 3. Accidents Statistics**
- 4. Current Initiatives and Challenges**





# **1. Overview of Myanmar OSH System**



# National OSH Policy

In Section 24 of Constitution 2008 .....

**“The Union shall enact necessary laws to protect the rights of workers”.**

# Government Agencies on OSH

- ❖ **Factories and General Labour Laws Inspection Department ,**  
*Ministry of Labour , Immigration and Population*
- ❖ **Boiler and Electrical Inspection Agency**  
*Ministry of Industry*
- ❖ **Department of Public Work**  
*Ministry of Construction*
- ❖ **Occupational Health Division**  
*Ministry of Health and Sport*
- ❖ **Mine Department**  
*Ministry of Resource and Environmental Conservation*
- ❖ **Myanmar Industrial Crops Development Enterprise**  
*Ministry of Agriculture , Livestock Breeding and Irrigation*
- ❖ **City Development Committees**



# The Existing OSH Legislations

- (1) The Factories Act***
- (2) The Oilfields (Labour and welfare) Act***
- (3) The Boiler Law***
- (4) The Electricity Law***
- (5) The Myanmar Mines Law***
- (6) The Pesticide Law***
- (7) The Municipal Act & City Development law***



## **2. Functions of Factories and General Labour Laws Inspection Department**



# Ministerial Structure

**Ministry of Labour, Immigration  
and Population**

**Office of the Minister**

**Department of Labour**

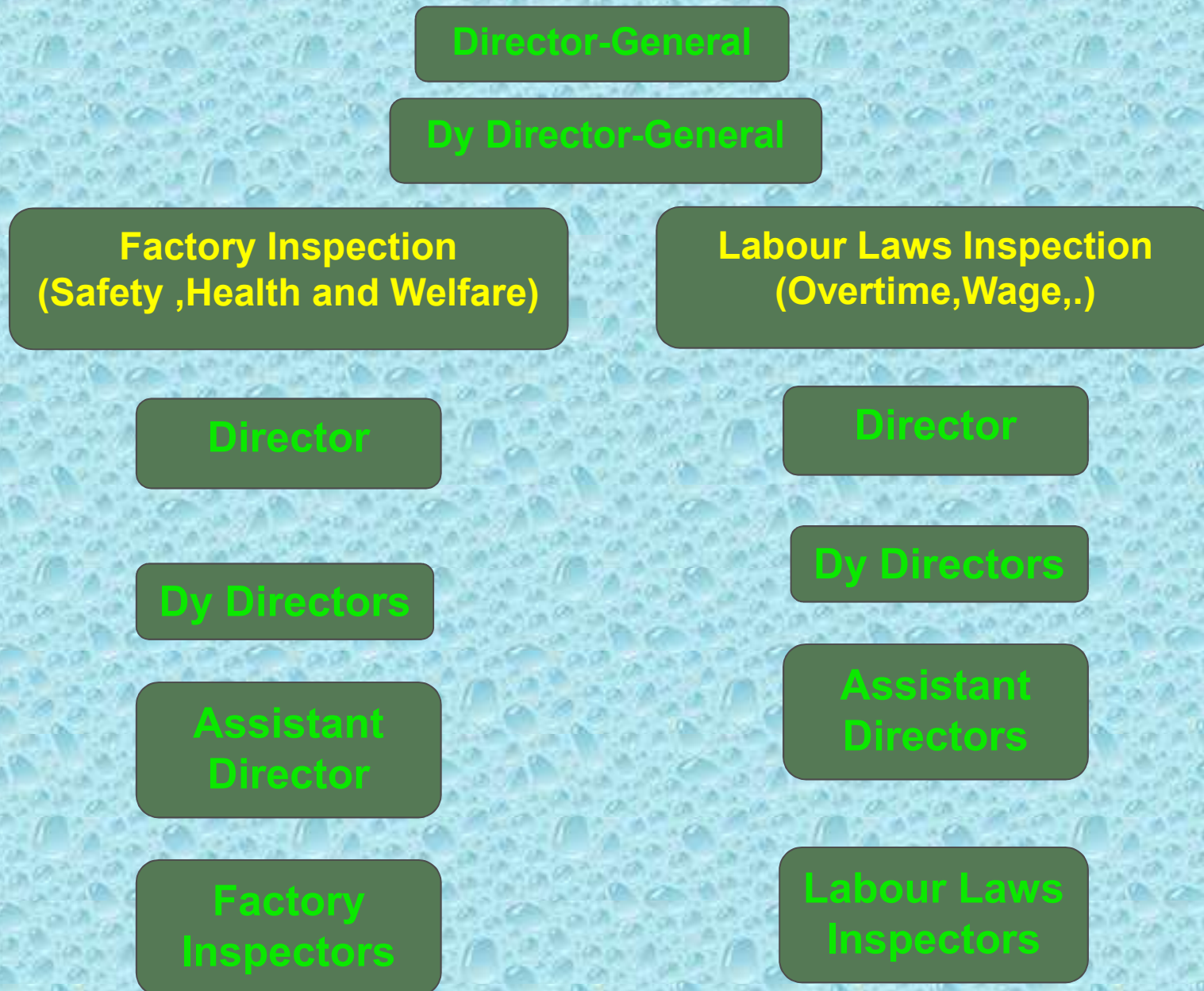
**Factories and General  
Labour Laws  
Inspection Department**

**Department of Labour  
Relations**

**Social Security Board**



# The Organizational Structure of FGLLID



# Objectives of FGLLID

- ❑ To enhance the productivity of labour by ensuring workers to enjoy their legal rights regularly and fully under the existing labour laws.
- ❑ To enforce OSH inspection





# Factories and General Labour Laws Inspection Department

## Objective

To enhance the productivity of labour by ensuring workers to enjoy their legal rights regularly and fully under the existing labour laws

## Functions and activities

- Inspection
- Accident Investigation
- Conducting Training and Awareness Raising on OSH
- Implementation of OSHMS
- Work Environment Measurement
- Cooperation with regional and international OSH organization

# The Structure of FGLLID

## The Inspectors of FGLLID

Previous		New	
Structure	Appointed	Structure	Appointed
90	69	326	162





# OSH Inspection

**Manpower**

**162 Inspectors**

**Inspection  
type**

**General OSH Inspection**

**Inspections  
targeted**

**25 Factories (Covered by FA)  
25 Small Establishments/Enterpries  
(Not Covered by FA)**

# **Main Activities on OSH**

**Inspection**

**Accident Investigation**

**Conducting Trainings on OSH**

**Awareness Raising on OSH**

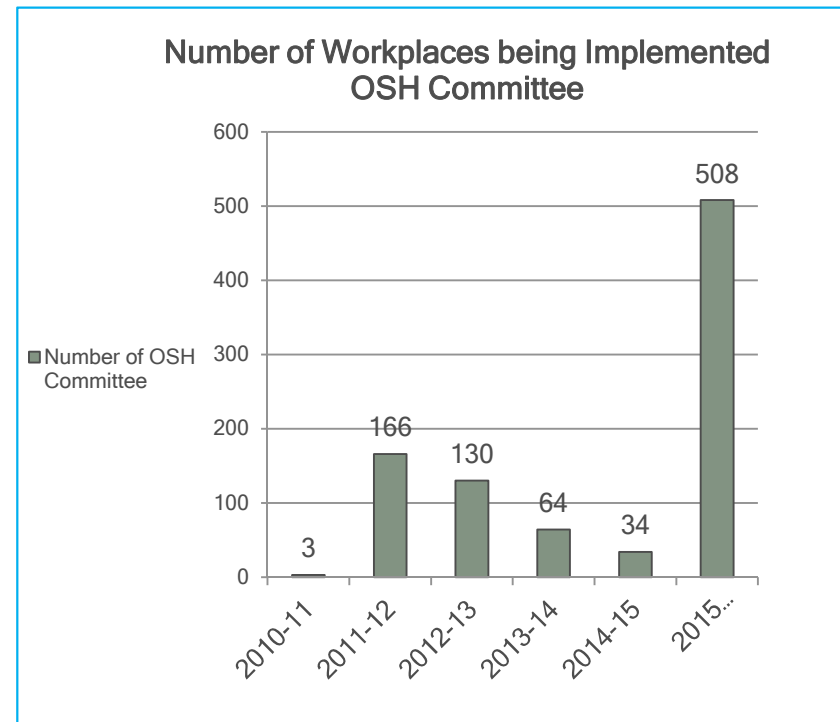




### **3. Accidents Statistics**

## Number of Workplaces being Implemented OSH Committee

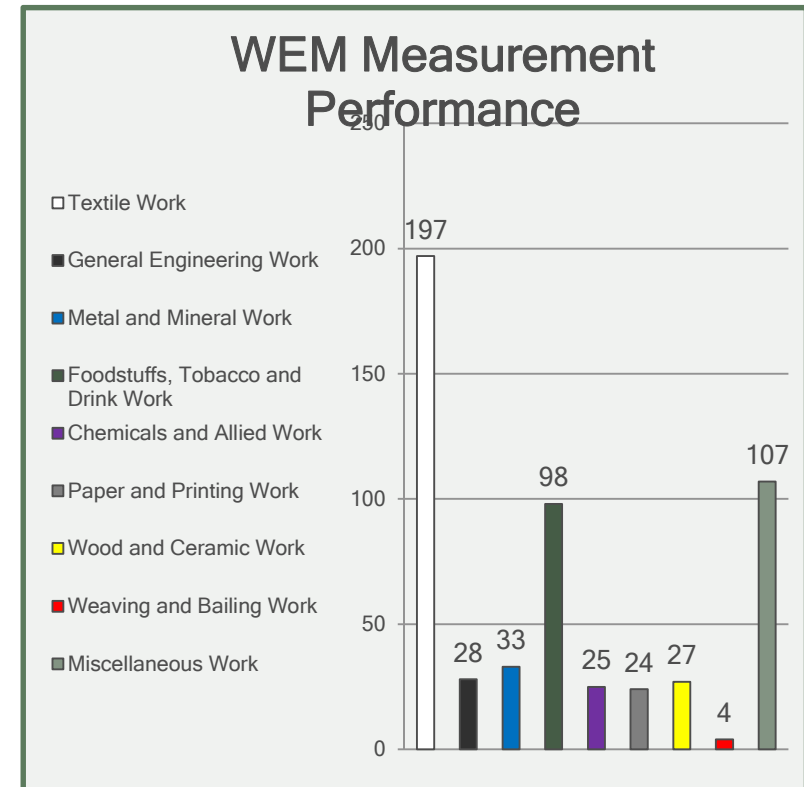
Fiscal year	Number of OSH committee
2010-11	3
2011-12	166
2012-13	130
2013-14	64
2014-15	34
2015 up to present	1025
<b>Total</b>	<b>1422</b>





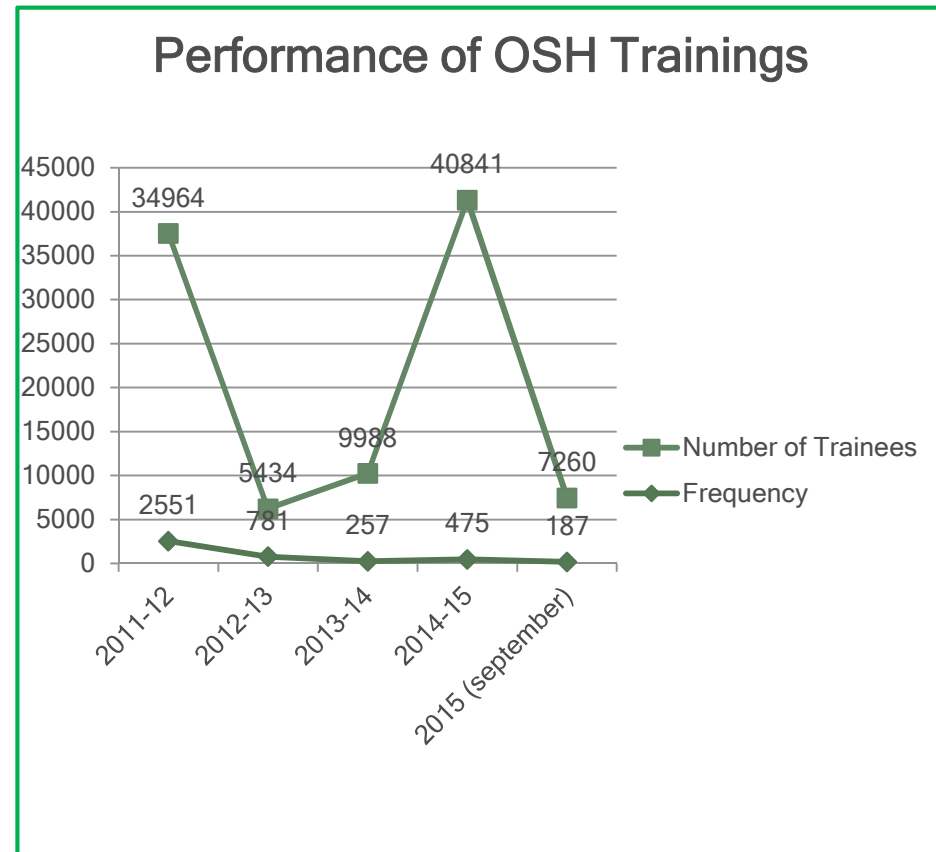
## WEM Measurement Performance

Trade	WEM Measurement
Textile work	239
General engineering work	30
Metal and mineral work	35
Foodstuffs, tobacco and drink work	117
Chemicals and allied work	27
Paper and printing work	28
Wood, stone and ceramic work	42
Weaving and bailing work	6
Miscellaneous work	122
<b>Total</b>	<b>646</b>



# OSH Training Performance

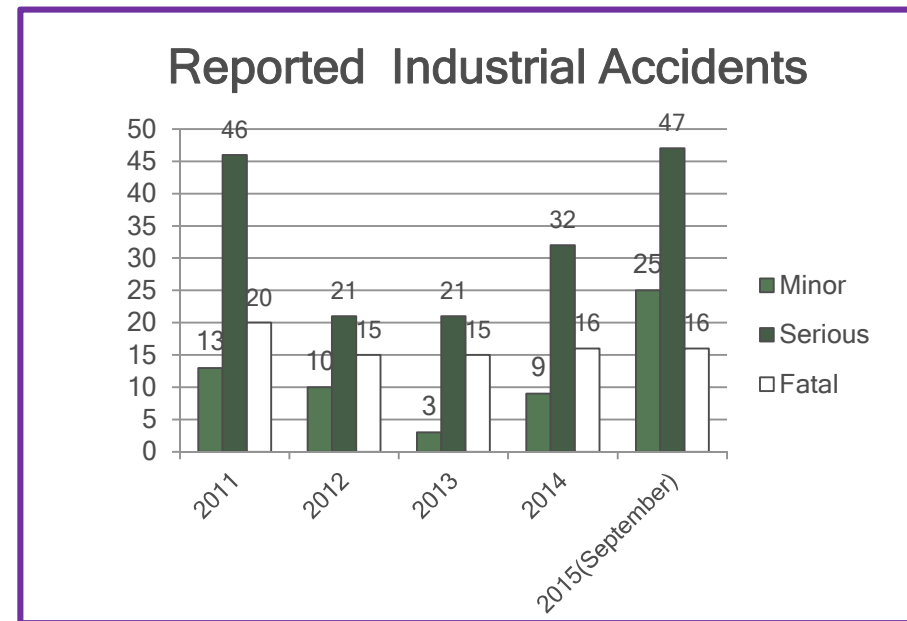
Year	Frequency	Trainees
2011-12	2551	34964
2012-13	781	5434
2013-14	257	9988
2014-15	475	40841
2015-16	698	20129
2016-17	255	18683
(upto May)		
<b>Total</b>	<b>5017</b>	<b>130039</b>





# Reported Accident Statistics

Year	Accident			Total
	Minor	Serious	Fatal	
2011	13	46	20	79
2012	10	21	15	46
2013	3	21	15	39
2014	9	32	16	57
2015	30	58	22	110
2016 up to May	19	37	9	65



## Accident Classification by Trade (2015)

Trade	M	F	Total
Textile	9	-	9
General Engineering	28	-	28
Mineral and Metal	11	-	11
Food, Drink , Tobacco and foodstuffs	16	3	19
Chemical and Allied Industry	4	1	5
Paper and Printing	3	-	3
Process Relating to Wood, Stone and Glass	33	8	41
Ginning and Press	1	-	1
Miscellaneous	6	3	9
Total	111	15	126 (110cases)





## 4. Current Initiatives and OSH Challenges



# **Working Environment Measurement**

**To be a safe and healthy workplace, Working Environment Factors such as Ventilation, Heat Stress, Noise , Illumination , Dust, Fumes and Organic Vapor Emission need to be improved.**

**So FGLLID conducts working environment measurements(WEM) and issues necessary instructions and provide technical advices .**

**So far 646 workplaces could be conducted for WEM and this process is still on.**





## **Conducting Working Environment Measurement at Workplaces.**



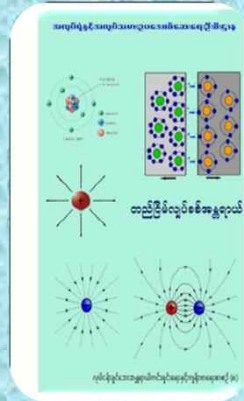


## Implementation of OSH -MS at Enterprise Level

Even though there have no laws/ regulations on OSH - MS , FGLLID has been cooperating with responsible persons from enterprises to apply OSH- MS at workplaces by voluntary basis.

So far 1025 of enterprises have already implemented OSH- MS and the process is still going on.





# OSH Educational Booklets







# Safety Posters







## OSH Awareness Seminar and Exhibition Photos





## Challenges

- ❖ **Budget Constraint**
- ❖ **Need more cooperation & coordination among the OSH responsible agencies, occupiers and workers.**
- ❖ **Out-dated the existing legislation on OSH**
- ❖ **Outdated equipments and less facilities in the existing industrial hygiene laboratory.**





*Kyay Zu Tin Par Tal*

**THANK YOU !**