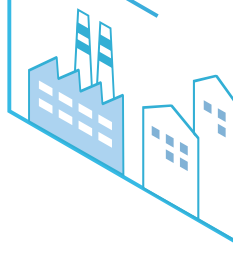
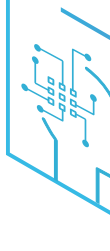
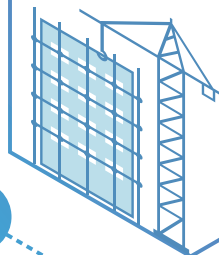


Vol. 115

KOSHA NEWS

FEBRUARY 2022

Protecting Worker's
Life and Health



Contents

News	A New KOSHA Leader : Dr. Jong Ju Ahn, the 15 th President of Korea Occupational Safety and Health Agency	01
	Support up to \$840,000 USD per business site for Industrial Accident Prevention Facility Loan	04
	Emergency meeting on the collapse in Gwangju	06
	Free consultation on safety and health management	08
	Preventive measures for suffocation at concrete curing sites in winter	10
OSHCI	Up to \$42,000 USD for developing Safety-certified Products	12

A New KOSHA Leader : Dr. Jong Ju Ahn, the 15th President of Korea Occupational Safety and Health Agency

Dr. Jong Ju Ahn, the former head of Social Safety and Communication Center at the Korea Social Policy Research Institute, has been chosen to lead KOSHA. Dr. Ahn started his term of 3 years as the 15th President of KOSHA with his inauguration ceremony on 10th January, 2022.

Dr. Ahn is an expert on occupational safety and health holding a master's degree in environmental health as well as a doctoral degree in occupational health from the Seoul National University. He is recognized as a well-qualified person to protect lives of workers and to enhance the level of safety and health of the industrial field with abundant of experiences.

His main publications are 'Asbestos, a silent killer (2008)', 'Society with amplified risk (2012)' and 'Stolen breath (2016).'

At the inauguration ceremony, he showed his aspiration by mentioning "Safety of workers is namely safety of people." "With new strategies for industrial accident reduction, I will make safer and healthier society for all" added he.



Keeping the pain of occupational accident's victim and their family in mind and working at field to prevent occupational accidents and diseases

Korea Occupational Safety and Health Agency (KOSHA) was established to contribute to national economic development by keeping workers safe and making employers endeavor to prevent industrial accidents and diseases.

For this, KOSHA conducts industrial accident prevention projects efficiently including R&D on industrial accident prevention techniques and distribution, and providing technical guidance and training on occupational safety and health.

KOSHA is not only an organization standing at a front line to protect workers' lives but also the only public organization for industrial accident prevention in Korea.

We know that the responsibilities the country and our people have given us are enormous. Over the past few years, our society has been deeply aware of how difficult it is to lower occupational fatalities to the level of advanced countries in prevention of industrial accidents and diseases.

In this respect, we have finally agreed to gradually reduce industrial accidents through a legal system called "Serious Accident Punishment Act." We are living in an era where if a worker is not safe this may cause insecurity of his/her employer as well as families.

I, however, do not believe that this alone can fully protect the lives of workers.

We will be able to step into the level of advanced countries in industrial accidents and diseases prevention only when all the people have an interest in preventing the accidents and diseases and the attitudes of companies toward safety and health issues change to a complete transformation.

The right to life and safety, the highest value for all human beings must be protected regardless of gender, age, richness, occupation or nationality. Workers are driving force of production that holds up the existence and future of the nation. Without workers' safety, there is no work and production. In particular, I will put more attention to the groups such as daily laborers, migrant workers, and SMEs who are vulnerable to industrial accidents.

All employees of KOSHA will be united to save the life of each and every one of workers. We will do our utmost to make Korea an advanced country in industrial accident prevention. To this end, we will establish a tight network and communicate smoothly with related government departments, national assembly, press, civil society, labor organization, and occupational safety and health experts.

I will keep the pain of occupational accident's victim and their family in mind and work at field to prevent occupational accidents and diseases.

Thank you.



Dr. Jong Ju Ahn
President
Korea Occupational Safety and
Health Agency

Support up to \$840,000 USD per business site for Industrial Accident Prevention Facility Loan

- Preferential support for high-risk worksite with less than 50 workers and weak financial conditions
- Enhanced support for construction of safety and health management system in preparation for enactment of “Serious Accidents Punishment Act”



┌ The KOSHA expands the implementation of “Support Project for Industrial Accident Prevention Facility Loan” in order to prevent industrial accidents by promoting improvements of safety/health facility at business sites in preparation for enactment of the Serious Accidents Punishment Act.

┌ “Support Project for Industrial Accident Prevention Facility Loan” is a project designed to provide loans for investment costs of industrial accident prevention facility, including harmful/dangerous machinery/apparatus or protective device, at the business sites in lack of funding ability under the conditions of long term and low interest rate, where a total of \$300 million USD (\$28.1 million USD increased from 2021).

┌ Eligibility is open to business sites purchasing industrial accident compensation insurance as well as corporations or private institutions (approved by the Ministry of Employment and Labor) established for the purpose of industrial accident prevention.

- Supports are preferentially available for high-risk business sites with less than 50 workers and vulnerable financial conditions as well as businesses participating in field training for vocational high schools.

※ Subjects to exclusion : Businesses delinquent with industrial accident insurance premiums, business sites with government subsidy in excess of \$8.4 million USD for the past 3 years (2019-2021), and businesses selected for government subsidy in this year;

┌ The amount of aids will be capped at \$840,000 USD, and will be offered under the conditions payable in 7 years by installments with a 3-year grace period at the fixed annual interest rate of 1.5% for the 100% of the amount of investment costs for facility determined by the KOSHA.

Especially for the purpose of building a safety and health management system through improvement of hazardous processes for 3 major high-risk business types* accounting for 73.6% of fatal trapping/fall accidents in the manufacturing industry for the past 10 years (2011-2020)

- the KOSHA eliminates the previous restrictions banning simultaneous offering of subsidy and loan during the same year and makes an exception for the subsidy for the safety investment innovation project** to be concurrently made together with the loans, starting in 2022.

* ① Manufacturing of machine and tools/metal/non-metallic mineral products,

② Manufacturing of chemical and rubber products, ③ Manufacturing of handmade articles and other products

** Safety investment innovation project : A project to support part of the costs (50%; up to \$84,000 USD) spent for improvement of hazardous processes for 3 major high-risk business types with aging root processes

Items for supports include dangerous machinery with safety secured and facilities improving work processes/environments, which are as follows:

1. New installation and replacement (including attached equipment, i.e. options) of harmful or dangerous machinery and apparatus;
※ Machine tool, such as CNC machining center, injection molding machine, industrial robot, conveyor, crane, press, etc.
2. Protective device required to be installed on harmful or dangerous machine and apparatus
3. Industrial accident prevention facility and equipment for execution of safety or health measures
4. Facility and equipment required to manufacture protective device and protective gear subject to safety certification

Applications may be filed to the front-line agencies** of the KOSHA with jurisdiction over the location of business sites in person or by post mail after an application document* is filled out, and more information can be enquired via the main number, 1544-3088.

- Notwithstanding the above, the business sites subject to supports for improvement of hazardous processes under the safety investment innovation project will be able to apply for loan supports regarding the business owner's share determined after applying for the subsidy first.

* Forms of application documents: clean.kosha.or.kr ⇒ Notices ⇒ Forms and Archives

** List of supporting agencies for loans on industrial accident prevention facility (front-line agencies of KOSHA).

“The year 2022 is a significant year where the Accidents Punishment Act enters into forces and safety and health management of businesses, such as ESG management, is highly valued,” a staff at the KOSHA said. “The KOSHA is here to contribute to construction of safety and health management systems and prevention of accidents at industrial sites by offering financial supports for business sites suffering difficulties in procuring necessary funds,” the official added.

Emergency meeting on the collapse in Gwangju

Focusing on developing preventive measures to prevent occurrence of similar accidents

Enhanced Nationwide On-site Inspections on Fall/Collapse at Construction Sites



Following a collapse accident in Gwangju, Southern West part of Korea, Jong Ju Ahn, the President of the KOSHA, convened a meeting for countermeasures with the heads of front-line agencies of KOSHA, and ordered thorough investigations into the causes of accident and enhanced inspections at construction sites around the nation.

During this meeting, the attendees examined the cause of the accident based on the details of ongoing investigation conducted by the KOSHA, and mainly discussed preventive measures concerning similar accidents by each front-line agency.

Especially in relation to this particular accident, the KOSHA aims to engage in year-round priority management of high-risk construction sites prone for fatal accidents throughout the nation,

- to provide full supports by dispatching experts for special supervisions over major construction sites of Hyundai Development Company implemented by the Ministry of Employment and Labor, and to enhance the management of other sites by executing emergency situation inspections.
- With respect to the collapse accident in Gwangju, the KOSHA organized an accident response team and currently provides on-site technical supports and conducts investigations of the accident in accordance with the “Manual on On-site Measures of Large-scale Human Accidents at Worksites.”

At this meeting, discussions were made with regard to the measures to strengthen inspections at fatal-accident-prone construction sites worth less than \$4.2 million USD.

- In addition, the KOSHA plans to enhance year-round patrols by designating the areas frequently suffering fatal accidents for the past 5 years as the ‘Red Zone.’

During the nationwide on-site inspections* first implemented on the 12th of this month in this year, a total of 1,074 sites were inspected, and 599 of the sites above were cited for a total of 1,308 cases** for inadequate safety measures, followed by corrective measures

* On-site inspection on January 12th : Inspections at 7 sites, including 886 construction businesses, 181 manufacturing businesses and waste treatment business;

** Inadequate safety measures : (Construction) 516 sites, 1,158 cases / (Manufacturing) 83 business sites, 150 cases;

- The KOSHA plans to continue operating the On-site Inspection Day this year and focus on inspections of key risk factors, such as falls and trapping, within construction and manufacturing businesses together with the Ministry of Employment and Labor.

Meanwhile, the KOSHA also reviewed the progress of preparation for supports to ensure the business sites to promptly adjust to the imminent enactment of the Serious Accidents Punishment Act.

- The KOSHA aims to provide consultations services for over 2,000 manufacturing and other businesses and 1,500 construction and chemicals businesses suffering from difficulties in building the safety and health management systems,
- to deliver aggressive supports to the sites with the budget of \$100.5 million USD, substantially increased from the previous years, to assist improvements costs for harmful/dangerous facility, including system scaffolding and ladder-type work plate, in order to prevent traditional accidents like falls and trapping,

* Budget for improvement costs of harmful/dangerous facility : \$79.2 million USD (2021) → \$100.5 million USD (2022), increased by \$21.3 million USD

- and to offer up to \$84,000 USD per business site by expanding the eligibility for the ‘safety investment innovation project’ supporting the improvement costs for dangerous machinery and processes. (Budget of \$274.8 million USD in 2022)

Jong Ju Ahn, the President of the KOSHA, said, “With regard to the collapses accident in Gwangju, we are determined to develop the countermeasures to prevent reoccurrences by investing best efforts to thoroughly investigate the site and identify the causes,

- and to bring a monumental turning point to substantially reduce fatalities from industrial accidents through accident prevention activities focusing on communications with the worksites by expanding the supports to help early adjustments to the Serious Accidents Punishment Act.”

“Soft-landing of the Serious Accidents Punishment Act”

Free consultation on safety and health management

Door-to-door service for 2,000 manufacturing and other businesses by experts from private accident prevention institutions



┌ The Ministry of Employment and Labor (Minister : Kyung Duk An; the “MOEL”) and the KOSHA (President : Jong Ju Ahn) announced on the 25th that they implement a free consultation project where experts from private accident prevention institutions personally participate in for manufacturing and other businesses (between 50 and 299 workers), excluding construction businesses, subject to enforcement of the Serious Accidents Punishment Act.

┌ Regarding consultation services, highly-skilled experts in the field of safety and health are scheduled to pay personal visits to businesses on at least 4 different occasions during 3 to 4-month periods by focusing on 7 key elements for safety and health management as they are to identify the personnel required for safety and risk factors within the facility and company.

[7 key elements]

- ① Leadership of the management
- ② Participations by workers
- ③ Identification of risk factors
- ④ Removal and control of risk factors
- ⑤ Plan on emergency measures
- ⑥ Safety and health management on subcontract, entrustment and service
- ⑦ Company-wide evaluation and improvement of safety and health

- Especially during the visits to a business entity, those experts plan to support the construction of safety and health management system by presenting the measures to elevate the safety and health leadership as well as preparation for the Serious Accidents Punishment Act based on interviews with the CEO of the business entity.

Businesses opting to take consultation services need to file an application to the institutions performing the service, metropolitan headquarters of the KOSHA or the Korea Federation of SMEs* by February 15th, where the services will be delivered starting in February.

- During this application period, approximately 1,000 businesses will be first selected, and additional 1,000 businesses will be selected after secondary applications are accepted, starting on March 2nd.
- In cases where overwhelming applications are filed, priority will be given to high-risk businesses where fatal accidents have occurred for the past 10 years and the businesses of relatively smaller size (between 50 and 150 workers).

* [Application Period] ▲ 1st : Jan. 26 (Wed) through Feb. 15 (Tue) /
▲ 2nd : March 2 (Wed) through March 15 (Tue)

* [Priority] ① High-risk businesses with experience of fatal accidents for the past 10 years
② Medium-size business (between 50 and 150 workers)
③ Businesses currently operating the safety and health through in-house appointments without entrustments to professional agencies (in such order)

The MOEL and KOSHA plan to hold monthly regional operation committees consisting of regional employment offices, regional offices of KOSHA and private experts for each region in order to promote the safety management practices by sharing and spreading exemplary cases within the region.

Gi Seop Gwon, the head of safety and health headquarters, said,

- “The government has been continuously developing and distributing the information required for the businesses, including the handbook on the Serious Accidents Punishment Act, guidebooks on safety and health management system and self-regulatory inspection tables for each business type, in order to relieve difficulties and anxiety which the businesses might be experiencing with imminent enactment of the Serious Accidents Punishment Act.”
- “Since the consultation service is designed to support the measures for the businesses with high risks and relatively smaller size to adopt safety and health systems into their business administrations, we do hope those businesses in need to apply for the service,” Gwon added.

Preventive measures for suffocation at concrete curing sites in winter

KOSHA enhances on-site check at constructions



Case. [Jan. 14th, 2022] During a plastering works on the floor of water tank at the basement of construction site, 2 workers suffered from carbon monoxide poisoning due to charcoal briquettes, which resulted in 1 dead and 1 injured.

With a recent series of suffocation accidents due to brown coals during concrete curing works at construction sites the KOSHA on the 25th announced an emergency measure to prevent the suffocations.

- For the past 10 years, 17 out of 25 suffocation accidents (68.0%) from construction sites were caused during insulation curing works of the concrete.
- At the construction sites in winter, brown coal stoves are used for the process of concrete curing following the placement of concrete. Suffocation accidents occur when ventilation is not properly ensured to maintain the temperature, which causes poisoning of carbon monoxide generated from the burning process of brown coals.

Accordingly, the KOSHA pays unannounced visits to construction sites around the nation and checks risk factors for suffocation on the occasion of the 'On-site Inspection Day' on the 25th in order to prevent suffocations.

- Upon on-site checks, the KOSHA checks the curing works using brown coals and offers guidance on safety measures for prevention of suffocation.
- In addition, the KOSHA is scheduled to disseminate the cases of suffocation accidents to the safety officers at construction sites and also to distribute self-regulatory inspection tables (See [Table 1]) for those work sites to voluntarily fulfill safety measures to prevent suffocations.
- The KOSHA also aims to offer guidance encouraging the use of hot air blowers instead of brown coal stoves for fundamentally eliminating the risk factors.

“Using brown coals in the pretext of economic grounds does not suit the national dignity of Korea, one of the 10 biggest economic power-houses in the world, and is simply an old practice that needs to be eradicated,” Jong Ju Ahn, the President of the KOSHA, said.

Self-Regulatory Inspection Table for Prevention of Suffocation Accidents at Insulation/Curing Sites

☞ ‘Concrete curing works’ are the biggest risk factor for suffocation accidents during the winter season. Carbon monoxide (CO) generated from burning of fuels, such as brown coals and lamp oil, causes suffocation by interrupting oxygen transfer in human bodies because its bonding strength with corpuscular hemoglobin is 200 to 300 times stronger than that of oxygen.

- Please run self-regulatory examinations whether the following compliance matters are being implemented prior to confined space works in order to prevent suffocation accidents at confined spaces.

Subject	Matters to Comply with	Yes/No	Note (Comments)
Confirmation of confined space & advance measures	• We have concrete insulation/curing works within our site.		
	• We do not use the fuel, such as brown coal, charcoal briquette, gel or lamp oil. ※ It is safe to use an electric hot air blower.		
	• Unauthorized access is prohibited at the insulation/curing worksites, and the sign banning the access is posted at the entrance.		
Availability of suffocation prevention equipment	• Measuring instruments for oxygen and harmful gas (including CO) are in place.		
	• Ventilation fan is in place.		
	• Air respirators and air-supplied respirators are in place.		
Safety Measures	• When those equipments are in need but not in possession, we are aware of the procedures of leasing from the KOSHA (T.1644-8595).		
	• We measure the concentration of oxygen and harmful gas and check for proper air conditions before entering into the confined space and during operations at confined spaces. ※ Optimal air ① Oxygen : 18.0 ~ 23.5% ② Hydrogen sulfide : Less than 10 ppm ③ Carbon dioxide : Less than 1.5% ④ Carbon monoxide : Less than 30 ppm		
	• We ventilate by using ventilation fans prior to entrance and during operations.		
	• We prohibit all accesses when optimal air condition is not verified based on measurement of oxygen and harmful gas.		
	• We ensure using air respirators or air-supplied respirators when working under the non-optimal air conditions.		
Work Procedures	• We have secured in-house regulations ensuring for business owners or managers to verify the safety measures above prior to operations.		
	• During operations at confined spaces, we place guardians outside the confined spaces.		
Education of safe work procedures	• Prior to operations at confined spaces, we notify workers and guardians of how to work safely. ※ Measurement of harmful gas, mobilization of ventilation system, wearing of protective gear, emergency measures upon accidents, procedures of rescue request, etc.		
Establishment and implementation of programs on confined space operations	• During operations at confined spaces, we establish and implement the programs, including location check of confined space, identification of harmful/risk factors, advance verification procedure, education and training and other preventive matters for health problems.		
	• We identify the work information, workers' information, concentration measurement and proper actions, examination of leakage/inflow/occurrence possibility and proper actions, protective gear and emergency contact systems prior to operations at confined spaces, and post them near the worksite.		

Up to \$42,000 USD for developing Safety-certified Products

Provide funds for R&D and test equipment purchase of harmful/dangerous machinery and protective device/gear



┌ The Occupational Safety and Health Certification Institute (OSHCI ; Director General : Young-Tae Kim) of the KOSHA supports the funds for R&D of harmful/dangerous machinery and protective device/gear as well as purchase of test equipment at industrial sites.

┌ This system has been developed in order to encourage developments and distribution of superb safety-certified products, where its eligibility is open to the manufacturing sites of harmful/dangerous machinery and protective device/gear registered with the KOSHA.

- ─ Up to \$42,000* USD per business site will be offered for R&D costs of new product technology for products subject to safety certification (within 60% of necessary expenses) or purchasing costs of test equipment to verify safety performances (within 50% of necessary expenses).

* One can only apply for either R&D cost or purchasing cost.

┌ The total amount for this year is set at \$467,880 USD, and priority supports will be offered for development of products for vulnerable classes, such as women, or safety-certified products using eco-friendly materials.

┌ Last year, 15 manufacturers were benefited with a total of \$440,000 USD, which means the average funds for R&D and purchase of test equipment per business site were \$39,480 USD and \$23,520 USD, respectively.

- ─ Above all, a safety helmet developed based on the financial supports for R&D fund is an integrated surface-protecting helmet which is currently patent pending, and the program also contributed to overseas exports and new market opening of small-and-medium enterprises through supports of test equipment capable of performances tests for overseas certification, including EN (Europe) and JIS (Japan).

┌ “We have a high hope that outstanding safety-certified products will be produced at industrial sites and competitiveness of Korean manufacturers will be elevated through these financial supports,” Young-Tae Kim, the Director General of OSHCI, said. “The KOSHA will continue investing efforts to make contributions to preventing industrial accidents by hosting the quality grand prize fairs in order to promote quality products,” Kim added.

Published by

Korea Occupational Safety and Health Agency
400 Jongga-ro, Jung-gu, Ulsan,
44429 Republic of Korea

Tel. +82 52 7030 745

Fax. +82 52 7030 326

E-mail. overseas@kosha.or.kr

Web(Kr). www.kosha.or.kr

Web(En). www.kosha.or.kr/english/index.do

Copyright © 2022 by KOSHA For right of reproduction or translation, application should be made to the International Cooperation Center, Korea Occupational Safety and Health Agency.

