

National OSH Policy, Issues, Challenges & Future Direction

Directorate General Of Labour Inspections Development
Ministry Of Manpower Republic Of Indonesia

Seoul, South Korea – June 2, 2014

Out Lines

- ❑ Introduction
- ❑ Policies and Program 2010-2014
- ❑ OSH Issues
- ❑ Challenges
- ❑ Future Direction
- ❑ Policies 2015-2019

Introduction

Republic of Indonesia

- ⊙ Total Area : 1.9 million sq miles
- ⊙ Location : 6° North - 11° South Latitude
95° West - 141° East Longitude
- ⊙ Population : 237 million
- ⊙ Number of workers : 111.281.744
- ⊙ Number of companies : 216.547



BASIC STATISTICS

Population (million)	237.64	
Population growth rate (%)	1.07	
Crude birth rate (per 1000)	18.57	
Crude death rate (per 1000)	7.17	
Life expectancy at birth (years)	Male	68.26
	Female	73.38
Infant mortality rate (per 1000 live birth)	34	
Rate of population aged 65-(%)	5.04	
Rate of population age 0-14(%)	28.87	
Unemployment rate (%)	6.32	
Total number of labor force (million)	120.4	

Accident rate in Workers covered by National Workers Insurance Compensation (30 Million Workers)

Year	Accident	Fatality	Fatality Rate (in 100.000 workers)
2001	104.774	1,768	5.89
2002	103.804	1,903	6.34
2003	105.846	1,748	5.83
2004	95.418	1,736	5.79
2005	99.023	2,045	6.82
2006	95.624	1,784	5.95
2007	83.714	1,883	6.28
2008	93.823	2,124	7.08
2009	96,134	2,114	7.05
2010	98,712	2,191	7.30
2011	99,491	2,218	7.39
2012	103,074	2,419	8.06
2013	103,285	2,438	8.13
2014	105,383	2,375	7.92

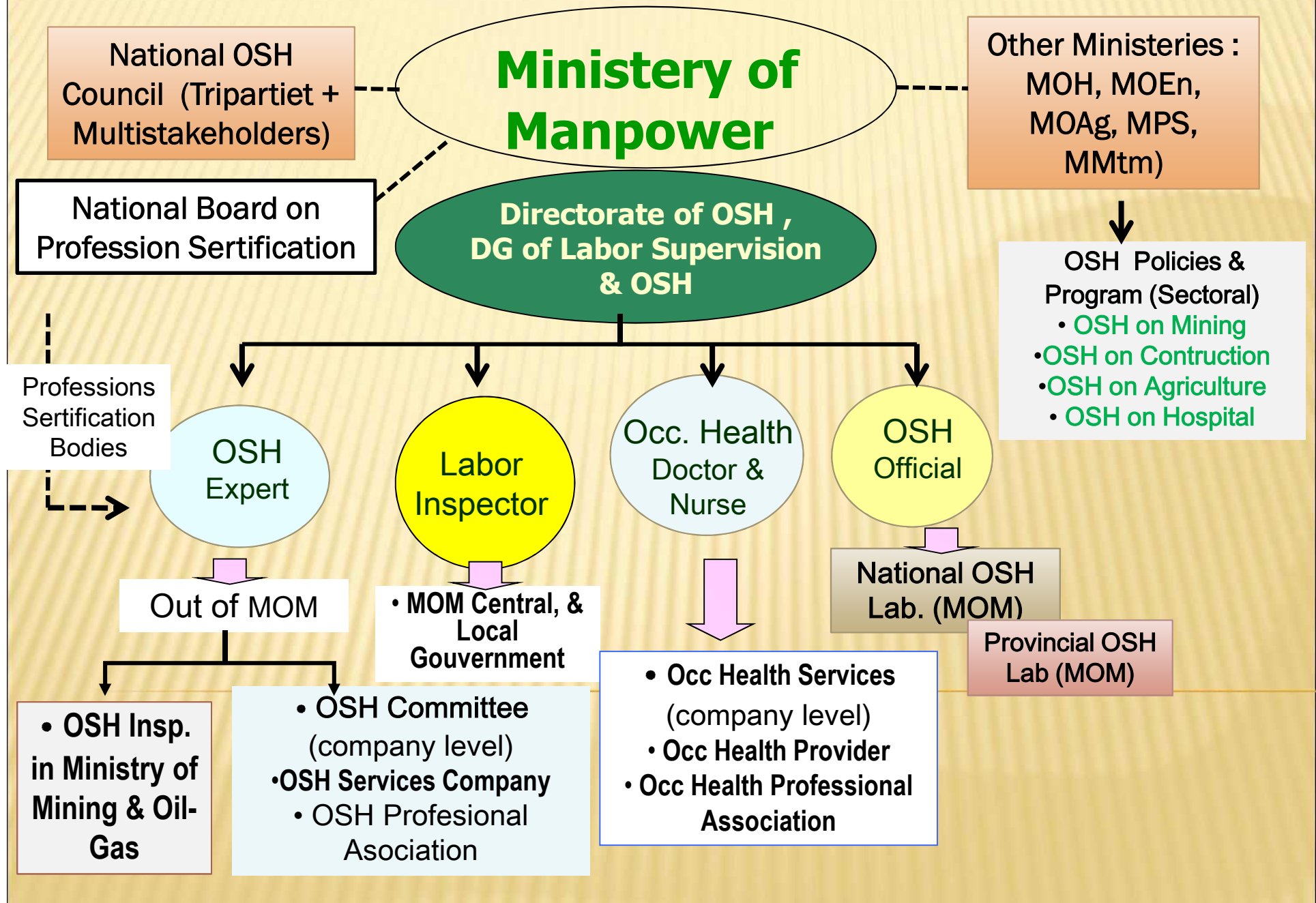
**Number of Workers covers by Worker Compensation
Total Worker**

**30 Million
120,4 Million**

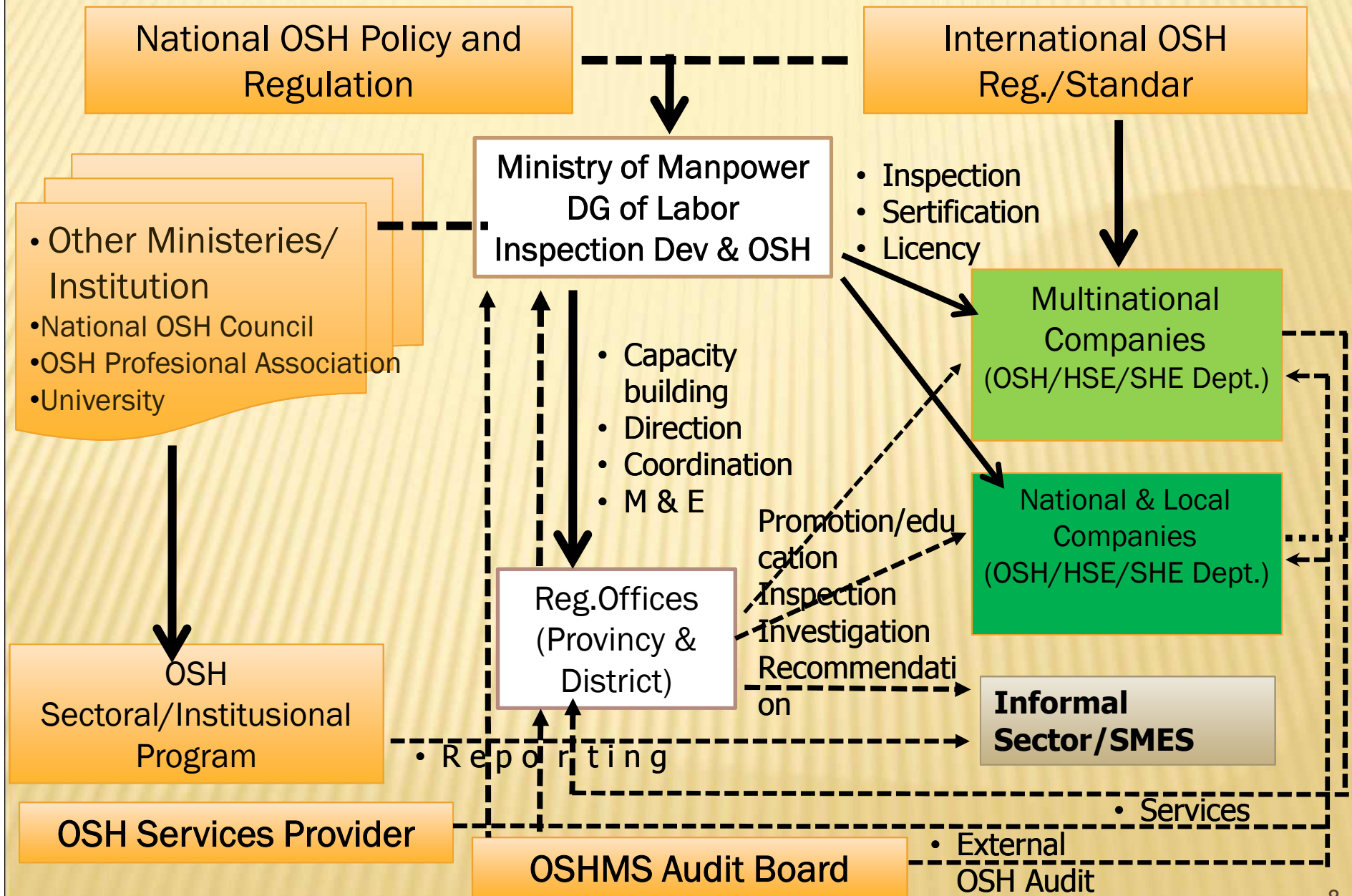
National OSH Related Regulations

- ❑ Act No. 3, 1951 on Labor Inspection → incl. Labor Inspection on OSH.
- ❑ Act No. 1, 1970 on Occupational Safe and Health → Basic OSH Regls.
- ❑ Act No. 13, 2003 on Employment → incl. OSH and OSHMS obligation.
- ❑ Act No. 36, 2009 on Health Act → including Occupational Health.
- ❑ Act No. 40, 2004 on National Social Security System.
- ❑ Act No. 24, 2011 on Board Management on Social Security → incl. worker health and occupational accident and diseases compensation.
- ❑ Government Regulation No. 50 of 2012 on OSHMS Implementation.
- ❑ Several regulation and guideline on OSH implementation on: boiler, vessel pressure, mechanic equipment, electrical, lift, construction, fire fighting, working environment, occupational health, occupational accident, occupational diseases, worker compensation, working at high, confined space, etc).
- ❑ PP 23 Tahun 2004 On National Board on Profession Certification (BNSP)
- ❑ **OSH Competencies Standards on:** OSH Officer (MOM Decree 42 ,2008), Industrial Hygienist (MOM Decree 209, 2008) Occupational Doctor (MOM Decree 121, 2010)

National OSH Institution Frameworks

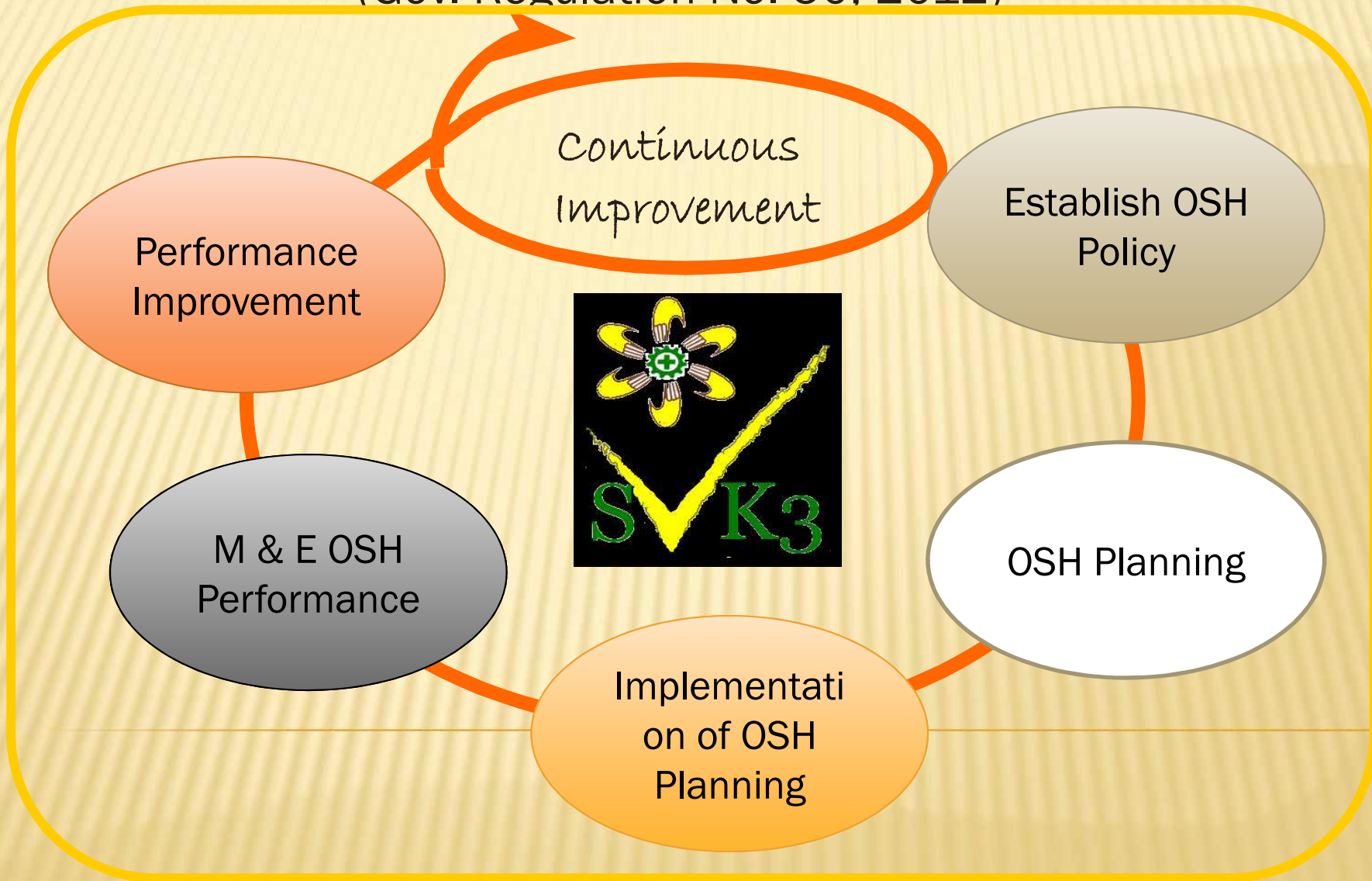


OSH Implementation at National to Company Levels



Basic Principles on OSHMS

(Gov. Regulation No. 50, 2012)



Organization involvements

❑ **Gouvernements:**

- **MOM as leading sector:** OSH Norm Supervision Directorate, National OSH Laboratorium (National and Province Levels), OSH inspection unit in province and district level.
- **Others ministry:**
 - MOH: Directorate of Occupational Health (MOH) & Occ Health Offices in regional area.
 - MENR: OSH Mining Inspectors

❑ **Intersectoral & Tripartiet:** Nat. OSH Council.

- ❑ **OSH Laboratorium:** OSH Center in National and Provincial Level, OSH & Environment Laboratorium in University

❑ **Board of OSHMS Auditor:** external independent auditor

❑ **OSH Academic & University:** OSH program on Medical and Public Health Faculties (Academy, Diploma, Graduate & Post Graduate)

❑ **Company level: OSH Committee,** Dep. of HSE, SHE Etc.

❑ **OSH Services Provider :** Training; Consultant, Fabrication, Repairer and inspection; worker health examination, work environment measurement.

❑ **OSH profesional association:** (Safety Officer), Occ Health Doctor (IMAOH), Industrial Hygienist (IIHA), Indonesia Medical Association, OSH on Construction¹⁰,

The Organisation Addressing OSH

No.	Organization	Quantity
1.	National OSH Council	1
2.	Safety Committee	2431
4.	Board of OSHMS Auditor/Sertification	8
5.	OSH Training Service Company/Provider	128
6.	Fabrication, Repairer and inspection Service Company	173
7.	Worker health Examination Company/Providers (Hospital/Health Lab)	30
8.	Working environment Service Company/Provider s	5

OSH Profession/Personels

- **Labor Inspector** (General & Specialist in national and local government, Ministry of Manpower)
- **Mining OSH Inspector** (Officer in Ministry of Energy and Natural Resources)
- **OSH Officer** (General, in the company)
- **OSH Specialist** (Boiler, Mechanical, Construction, Electrical, Lift, Chemical)
- **OSH officer on:** Working at Height, Confined Space
- **Occ Health Doctor and Nurse**
- **Industrial Hygienist**
- **First Aider at Workplace**
- **Work Compensation Doctor**
- **Specialist Doctor on:** Occ. Diseases, aviation, diving.
- **Occ Health Counsellor** (Officer from Ministry of Health)
- **OSH Graduated from university** (Graduate and post graduate)

Number of Labor Inspector :

Labour Inspector	Quantity
❑ General	1460
❑ OSH Specialist	361
❑ Labour Investigator	563

Sertifiied OSH expert and personnels:

No	OSH Sertified	Quantity
1.	Certified General OSH Practices	4583
2.	OSH Expert in Fire Protection	253
3.	OSH Expert in Chemical	100
4.	OSH Expert in Electrical	74
5.	OSH Expert in Construction	1293
6.	Occ. Health Doctor	789
7.	OSHMS Auditor	445
8.	Electrical Technician	851
9.	Fire Protection Officer	612
10.	Fire Fighter	474

cont.

No	OSH Sertified	Quantity
11.	Fire Protection Coordinator	376
12.	Boiler Operator	967
13.	Lifting Equipment Operator	7809
14.	First Aid Officer	1087
15.	Chemical officer	159
16.	Elevator Technician	156
17.	Rope access Technician	80
18.	Confined Space Technician	40
19.	Welder	312

OSH Networking and Colaboration

❑ With National Stakeholders:

- National OSH Stakeholder Meeting in National Level and several local level (National and Local OSH Council)
- Task Force on HIV-AIDS at Workplace under National AIDS Commission (MOM as coordinator)
- Networking on TB Program at Workplace with MOH
- Task force to solve Workers Compensation Claims
- Informal forum in social media (Indonesia HSE-Club, Indonesia Occupational Health Mailing List)

❑ With International Stakeholders:

- ASEAN OSHNET
- APOSHO
- AOSHRI
- IOC
- ASEAN BCA
- ILO, JICA, KOSHA etc.

OSH Program 2010-2014

Vision: “*Indonesia OSH Cultured 2015*”

A.Strategic Program:

- **Develops regulation and guideline.**
- **Develops OSH Competencies Standars.**
- **Capacity Building:** TOT, technical assistant meeting for Labor Inspector from the local offices and OSH Personel from the companies.
- **Capacity OSH organisation:** Safety Commitee, OSH Services Providers, Occupational Health Services.
- **Intersectoral & regulation harmonisation meeting and FGD.**
- **Collaboration Program :** Prevention & control on HIV-AIDS, TB and Drugs at workplace.
- **Join program development with International organization (ILO, ASEAN OSHNET, AOSHRI, APHOSO, JICA, KOSA).**

OSH Program 2010-2014

B. Promotion Program:

- ***Annually: “National OSH Day” in January 11th.***
- **Giving OSH and AIDS Awards** for Companies, Local Government and Personal Contributors.
- **Mounting OSH Flag** (Banner, Billboard, Poster, Leaflet, Sticker, etc.)
- **Convension/Seminar/Workshop, training & TOT, etc. in National and Local Levels.**
- **OSH Exhibition.**
- **Pers conference, talk show, Social Media, etc.**

OSH Program 2010-2014

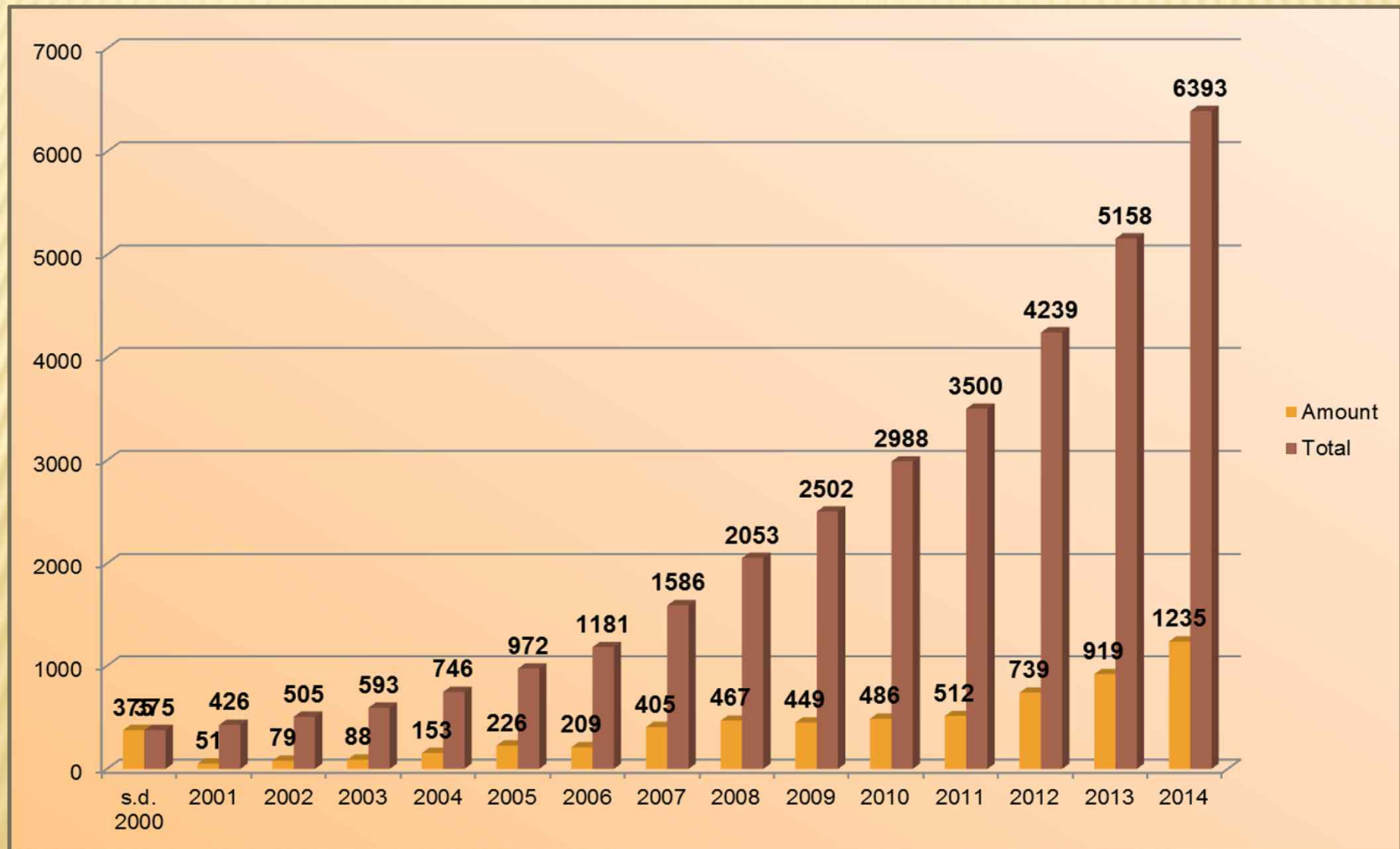
C. Implementation Program:

- OSHMS Audit
- OSH & AIDS Award verification,
- Occupational accident & diseases investigation,
- Workers health & environment assessment,
- Inspection, testing & sertification OSH facilities,
- Training and sertification OSH personels.
- Sertification & evaluation of OSH Services Providers.
- Training & TOT, WISCON, WISE, SCORE, Decent Work, Better Work, etc.

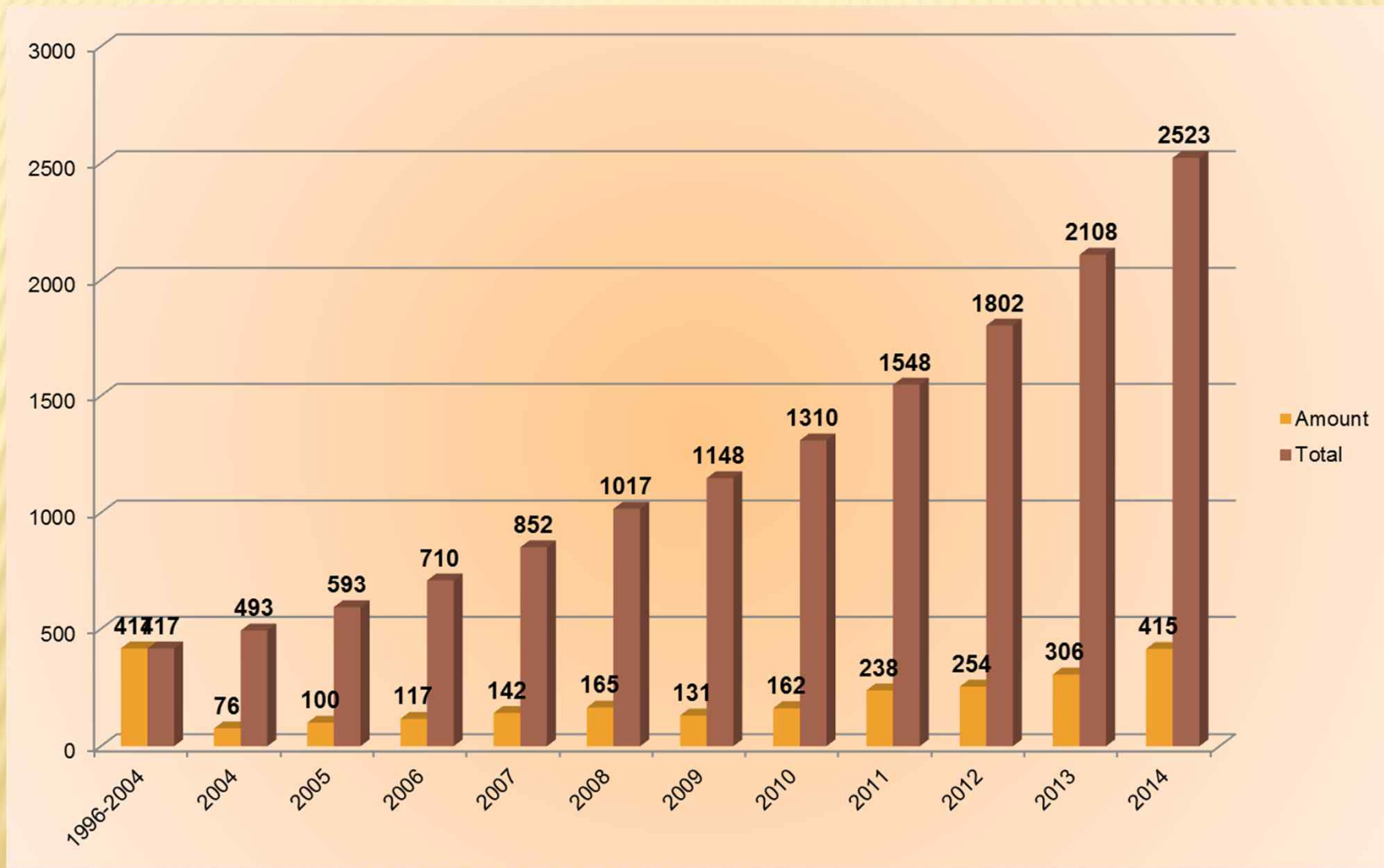
OSH and AIDS Awards:

- ☐ Zero Accident Award
- ☐ OSH-MS Sertification Award
- ☐ HIV - AIDS at Workplace Award

Zero Accident Award for the Companies up to 2014



OSH-MS Certification Award up to 2014



OSH Issues

- ❑ **OSH and Global Competition:** business competition related to OSH implementation and OSH management system.
- ❑ **Intersectoral** coordination, collaboration & harmonization.
- ❑ **Vulnerable peoples: workers on SMES/informal sector**, migrant workers and **high risk sector:** maritime, plantation, construction, oil & gas, mining, petro chemical, transportation, chemical substance transportation
- ❑ **Safety more dominant** than occ. Health and work environment program in the programs implementation
- ❑ **High Risk Workers to HIV AIDS and TB** as national borden and dominantly in productive peoples/workers (80 %).

Challenges

❑ Internal:

- Geographic condition: archipelago, wide area, remote areas, maritime area.
- Very poor data on occ. (related) diseases, cause by: bad company image assumption, chronically process, lack of work environment assessment, lack of risk based workers health assessment.
- Occupational Accident still high
- Economics growth & industrialization: plantation, construction, mining, oil and gas, chemical industries, food and beverage industries, information & technology.
- Dominantly of informal sectors industries.

Challenges

External:

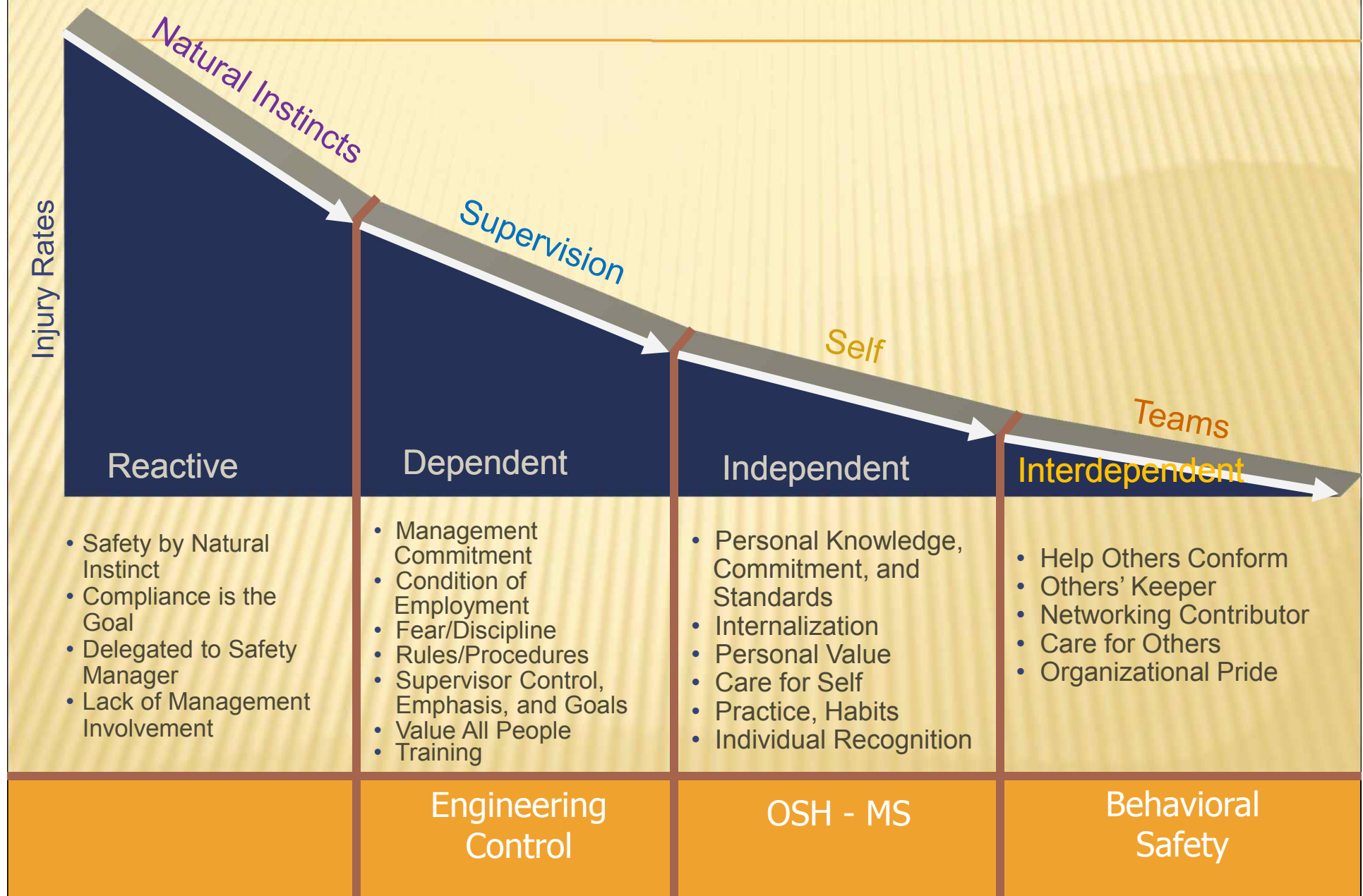
- **Global competition**
- **Global Warming**
- **Migrant Workers in Foreign countries**
- **International OSH Standard**

Future Direction

Minimize of occ. accident and occ. diseases by multi program and approach:

- ❑ Encourage all people to have awareness and participation on OSH by: aintensive of training of trainers, campaign, seminar, workshop, socialization and education, FGD, Etc.
- ❑ Develops Competencies Standard Certification for all OSH professions.
- ❑ Integrated OSH program with related issues: HIV-AIDS, TB, workers compensation system, migrant workers, reproductive health.
- ❑ Labor inspection and reporting system on OSH integrated by online system.
- ❑ Introduction of OSH in formal education at all levels
- ❑ Expansion of networking and collaboration with many stake holders (government, private, university and community) and international organization.
- ❑ Involvement general doctors and primary health center program (in Puskesmas/MOH) to promote and services on Occ Health for workers.

By OSH-MS Implementation to Establish Safety Culture



National OSH Policies 2015-2019

❑ Vision:

**“Indonesia Community Independently on OSH
Cultured in 2020”**

❑ Slogans: for National OSH Day (12nd February) Annually:

- **2015: “OSH MS Implementation to establish Indonesia OSH Cultured in Free Trade Era”**
- **2016: “Enhanced OSH Cultured to Support Productivity and Competitiveness in Global Market”**
- **2017: “OSH Cultured to Increase Quality of Human Life to Direct Safety, Healthy, and Productive Community”**
- **2018: “OSH Cultured to encourage Establish Charactered Nation”**
- **2019: “Establish Indonesia OSH Cultured community independently to Support National Economic Stability”**

Objectives and Goals 2015-2019

❑ Objectives:

- Increase awareness and participation every people on OSH implementation in **every business activities**.
- Management of **OSH related data comprehensively**.
- **Mobilization all resources** to address OSH implementation in harmonize cooperation and collaboration.

❑ Goals:

- Established of safe, comfort, and efficient condition at every workplaces to support productivity and prosperity.
- Decrease of occ. accident and diseases to safe all peoples as **human capital**.
- Increasing peoples quality of life Human to improve **competitive advantage**

National OSH Policies 2015-2019

- ❑ 2015: *“OSH MS Implementation to establish Indonesia OSH Cultured in Free Trade Era”*
 - OSH Cultured for the companies
- ❑ 2016: *“Enhanced OSH Cultured to Support Productivity and Competitiveness in Global Market”*
 - OSH Cultured for Public Companies
- ❑ 2017: *“OSH Cultured to Increase Quality of Human Life to Direct Safety, Healthy, and Productive Community”*
 - OSH Cultured in economic activities
- ❑ 2018: *“OSH Cultured to encourage Establish Charactered Nation”*
 - OSH Cultured in communities life
- ❑ 2019: *“Establish Indonesia OSH Cultured community independently to Support National Economic Stability”*
 - OSH Cultured in the national wide

A scenic mountain landscape with a map of Indonesia overlaid. The map is colored red and white, with the Indonesian flag's colors. The background shows a lush green valley with a winding river, surrounded by steep, forested mountains under a clear blue sky. The text "Terima Kasih" and "Thanks Very Much" is written in a white serif font at the bottom.

Terima Kasih
Thanks Very Much