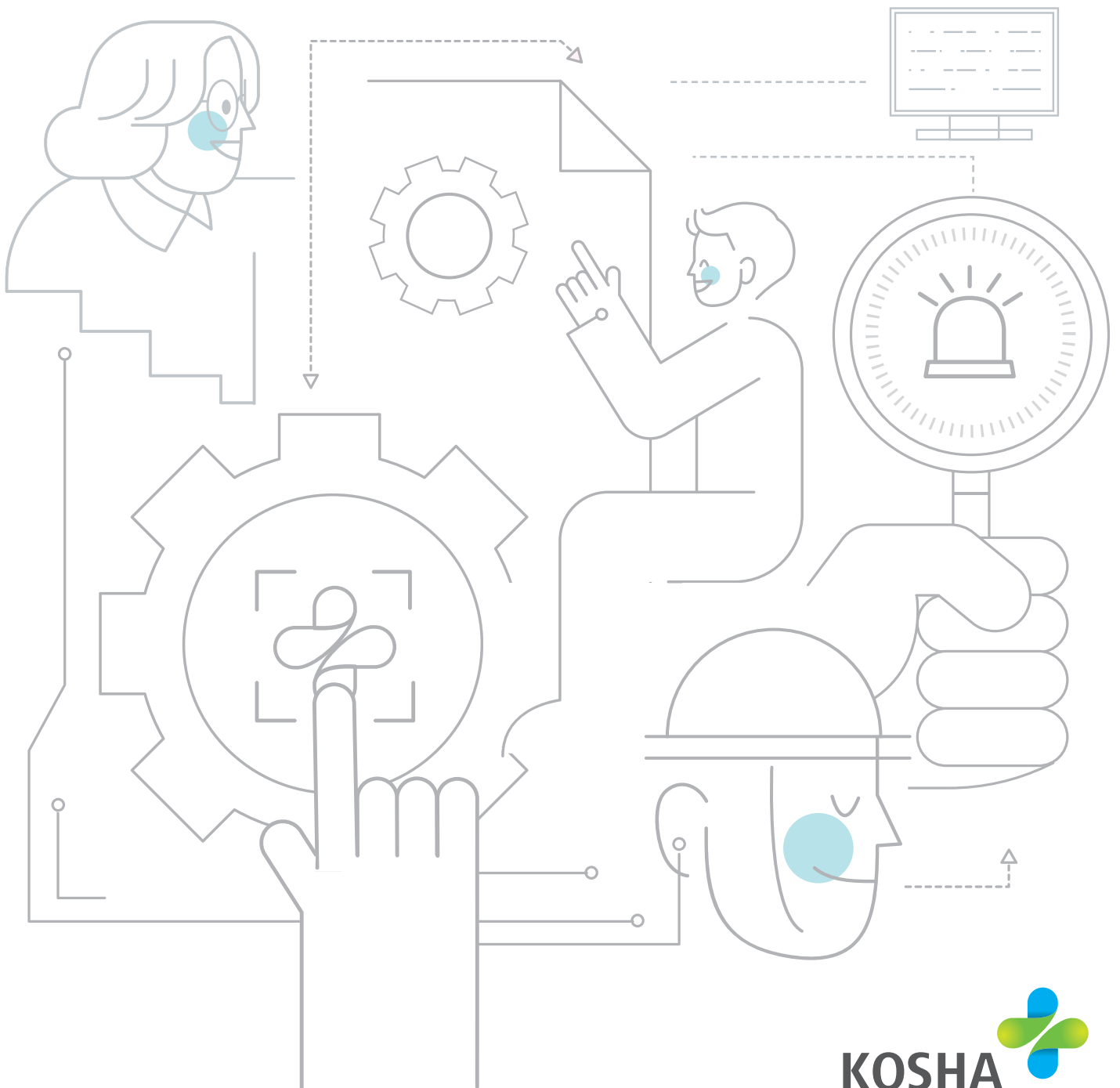


Protecting Worker's
Life and Health

KOSHA NEWS

Vol. 124

AUGUST 2023



KOSHA NEWS

Protecting Worker's Life and Health

vol. **124**

Contents

KOSHA Signed the Agreement with the Korea Support Center for Foreign Workers	03
Severe Accidents at Construction Sites Will Be Reduced in a Smart Manner!	06
"Risk Assessment for Services" Is Not Difficult!	09
KOSHA's Special Inspection on Workplaces to Prepare for Heavy Rains	11
Establishing Safety and Health Subject for Industrial-Workers-To-Be	13

KOSHA

To Prevent Foreign Workers Under the EPS from Occupational Accidents

KOSHA Signed the Agreement with the Korea Support Center for Foreign Workers

Reducing occupational disasters of foreign workers by establishing a cooperative system in safety & health

- The Korea Occupational Safety and Health Agency (hereinafter referred to as 'the agency' or 'KOSHA') signed the agreement with the 9 major Korea Support Centers for Foreign Workers* (hereinafter referred to as 'the major centers') in June 2023. This is to prevent foreign workers under the Employment Permit System (EPS) from occupational accidents.

* The major centers provide counseling to employers as well as foreign workers under the EPS who suffer from cultural differences and language barriers, and comprehensive support services for foreign workers such as Korean classes, legal advice for daily life and ICT training. With the financial support of the Ministry of Employment and Labor, there are centers in Seoul, Uijeongbu, Gimhae, Changwon, Incheon, Daegu, Cheonan, Gwanju and Yangsan, South Korea, in operation.

- As of 2023, the number of new foreign workers entering South Korea reached 110,000. The Korean government has separately set the quota for 5,000 workers in the area where there is a lot of the reported dangerous work that is labor intensive such as shipbuilding, which illustrates that there should be more preventive efforts to prevent foreign workers under the EPS from occupational accidents.

KOSHA Signed the Agreement with the Korea Support Center for Foreign Workers

- Against this backdrop, KOSHA decided to sign such an agreement as a part of the 'Severe Disaster Reduction Roadmap' established by the Ministry of Employment and Labor on November 30, 2022, in order to prevent foreign workers under the EPS from occupational accidents.
- This agreement will establish an active cooperative system between KOSHA and the major centers for activities* to prevent foreign workers under the EPS from occupational accidents.

* Including carrying out safety and health training, promoting activities to spread safety culture, joint development & distribution of safety and health content, capability building through safety and health training at the major centers, etc.

- KOSHA supports professional instructors for training, safety and health content and VR hands-on training, while the major centers support KOSHA to get involved in safety and health training for foreign workers under the EPS, counseling and various events. Also, there will be regular meetings planned to share information on safety and health and strengthen the cooperation between the organizations.
- Meanwhile, KOSHA's Gyeongnam Regional HQs and Changwon Center provided two rounds of the VR safety training on Sunday, June 18, 2023. One hundred foreign workers went through the VR safety training such as forklift accidents, suffocation accidents in sealed rooms and jamming near conveyors.

KOSHA

KOSHA Signed the Agreement with the Korea Support Center for Foreign Workers

- Indrer (Nepal, 27) participated in the VR safety training and said, "The video felt realistic and fun. It helped me understand the concept of safety and I got to learn how important safety is. I want to introduce this training to my friends."
- KOSHA will take more active measures to reduce occupational accidents of foreign workers under the EPS by constantly delivering safety and health information to those workers and their employers through active cooperation with the major centers that are equipped with the nationwide network and resources to promote interests and commitments in preventing occupational accidents.



Severe Accidents at Construction Sites Will Be Reduced in a Smart Manner!

Operating testbed for smart safety equipment at construction sites and developing the guidelines to apply the equipment to the sites

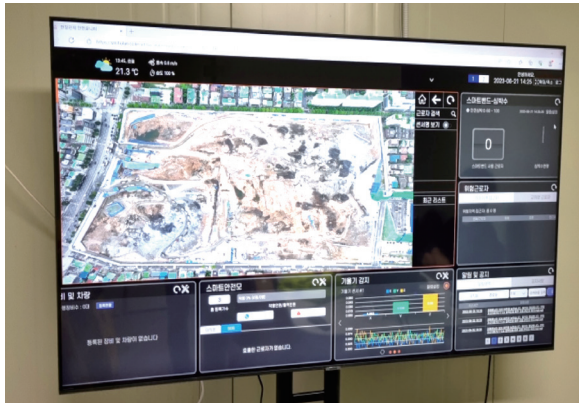
- The Korea Occupational Safety and Health Agency (hereinafter referred to as 'the agency' or 'KOSHA', President AHN Jong-ju) will develop the standard models of smart safety equipment and assessment criteria that will be deployed at construction sites between June and November of 2023. To that end, the agency will establish the testbed at the sites prone to fatal accidents and apply those smart safety equipment accordingly based on the types of construction.
- The market for smart construction safety is growing as more smart safety equipment is developed and deployed. However, there is no assessment criteria regarding how to apply smart safety equipment based on the site situations as well as functions and performance of that equipment. As a result, construction sites experience difficulties in choosing and operating smart safety equipment.
- The agency works with the Seoul National University R&D Foundation Tech-biz Innovation Platform to run testbeds at construction sites operated by Hyundai Engineering & Construction between June and September of 2023. For each detailed construction task such as drilling, building structure, and finishing work, a total of 10 types of smart safety equipment including controlling system, AI surveillance camera and sensors are planned to be deployed, which will help the sites establish the most optimal model of smart safety equipment set.

Severe Accidents at Construction Sites Will Be Reduced in a Smart Manner!

- After running those testbeds, the staff at the construction sites will have hands-on experience of using those smart safety equipment; opinions and feedback from the sites will be collected and reflected onto the R&D results.
- In addition, detailed guidelines are scheduled to be provided regarding installation conditions and methods of equipment, labor requirements and operation options by the type of construction, equipment and installation phase. Detailed assessment criteria for smart safety equipment will also be developed by utilizing the results of users surveys such as the minimum performance standard by equipment and user satisfaction.
By providing the guidelines to the construction sites, KOSHA plans to utilize the feedback and the R&D results from the sites as the guiding principles to introduce the assessment standards.
- Director KIM, Gyu-wan of Smart Safety and Health Technology Center of KOSHA said, "This is meaningful as we can establish a system to prevent occupational accidents by using new technologies in partnership with KOSHA, the academia and the industry." He also added, "This research project will contribute to the prevention of occupational accidents at workplaces where they use smart devices by developing and deploying high-quality smart safety equipment."

KOSHA

Severe Accidents at Construction Sites Will Be Reduced in a Smart Manner!



Photos: KOSHA has established and been operating the testbed in order to develop the smart safety model for construction sites and establish assessment criteria



“Risk Assessment for Services” Is Not Difficult!

- **Had a kickoff meeting to establish a cooperative system in safety and health for the field of service industries in 2023**
- **Establishing the private-public cooperative (governance) system among the Ministry of Employment and Labor, KOSHA and private organizations**
 - The Ministry of Employment and Labor (Minister LEE, Jung-sik) and the Korea Occupational Safety and Health Agency (hereinafter referred to as ‘the agency’ or ‘KOSHA’, President AHN, Jong-ju) will establish a cooperative system in safety and health in order to prevent accidents and deaths at service workplaces lacking safety and health infrastructure.
 - The ministry and the agency adopted the Severe Disaster Reduction Roadmap (released in November 2022) and had a kickoff meeting starting from 11AM on Friday, June 30, 2023, to establish a cooperative system in safety and health for the field of service industries, which will realistically develop and implement tasks that can help prevent accidents and deaths.
 - The ministry and the agency have noted that risk assessment systems are sometimes difficult and complicated to apply to the sites by the service industries. Accordingly, both organizations have developed the Case-focused Risk Assessment (CFRA) to suggest to the industries. This can be used by

“Risk Assessment for Services” Is Not Difficult!

anyone without any expertise. Also, both the ministry and the agency plan to provide customized services to prevent accidents and deaths in service by developing CFRA to workplaces through private organizations. They will continue to listen and collect feedback from the sites to make necessary improvements.

- President AHN of the agency said, “My agency will implement customized support to the site situations to prevent accidents and deaths at service workplaces.” He also added, “We plan to provide risk assessment methods that anyone can use without certain expertise, which will help us do our best to prevent accidents and deaths at service workplaces.”



KOSHA's Special Inspection on Workplaces to Prepare for Heavy Rains

KOSHA ordered thorough management on heavy rain factors such as collapse and flood at construction sites

- The Korea Occupational Safety and Health Agency (hereinafter referred to as 'the agency' or 'KOSHA', President AHN, Jong-ju), a sub-organization of the Ministry of Employment and Labor, visited the construction site at Ok-dong, Nam-gu of Ulsan city on Wednesday, July 19, to check on risk factors due to heavy rains. This time, the agency focused on checking certain risk factors during the monsoon season including heavy-rain-induced sinkholes and the collapse of structures, electric shock due to flood, and strong winds.
- The monsoon season increases the risks of accidents such as flooding, burying and collapsing due to heavy rains. Therefore, construction sites need to conduct safety checks and maintenance for drainage facilities. There should be other added safety measures including restrictions on entering areas with concerns of collapse (e.g. retaining wall), more plastic covers on drilled surfaces and slopes, and the establishment of emergency evacuation plans.
- During this monsoon season, the agency plans to check on safety measures (e.g. electric shock, strong winds) by reviewing risk factors at the sites. The agency, along with the Ministry of Employment, will declare the 'Special Response Period Against Heavy Rain and Heat Wave' until the end of August for disaster prevention.

KOSHA

KOSHA's Special Inspection on Workplaces to Prepare for Heavy Rains

- President AHN of the agency check the risk factors and safety measures to prepare for heavy rains at construction sites in the Ulsan area and said, "Due to climate change, we face unprecedented seasonal risk factors that we need to be mindful of. We also need to see whether safety measures at the sites work properly." He also added, "As we expect more rain until the end of August, workplaces need to have certain plans to prevent accidents due to heavy rain."



Establishing Safety and Health Subject for Industrial-Workers-To-Be

- **KOSHA and Korea Tech signed an MOU**
- **Introducing industrial safety and health training as a part of vocational training course ... “Strengthening a sense of safety”**
 - Starting from next year, 870,000 industrial-workers-to-be will have an opportunity to go through occupational safety and health training as a part of their vocational training curriculum.
 - The Korea Occupational Safety and Health Agency (KOSHA) and the Korea University of Technology and Education (Korea Tech) signed on MOU on the 21st last month at Korea Tech in order to newly start safety and health course at 3,500 vocational training institutes as a part of their training curriculum.
 - This is a cooperative project between the two organizations under the goal of reducing occupational accidents of less-skilled workers from various industrial sites, working conditions and corporate culture. As of last year, new workers (less than 6 months of experience) accounted for 53.7% (57,528 workers) of the reported accidents among the entire 107,214 workers, and 60.4% (528 workers) among the total deaths due to accidents ((874 workers). This suggests that those less-skilled workers are one of the major concerned groups to deal with according to the government’s Severe Disaster Reduction Roadmap.

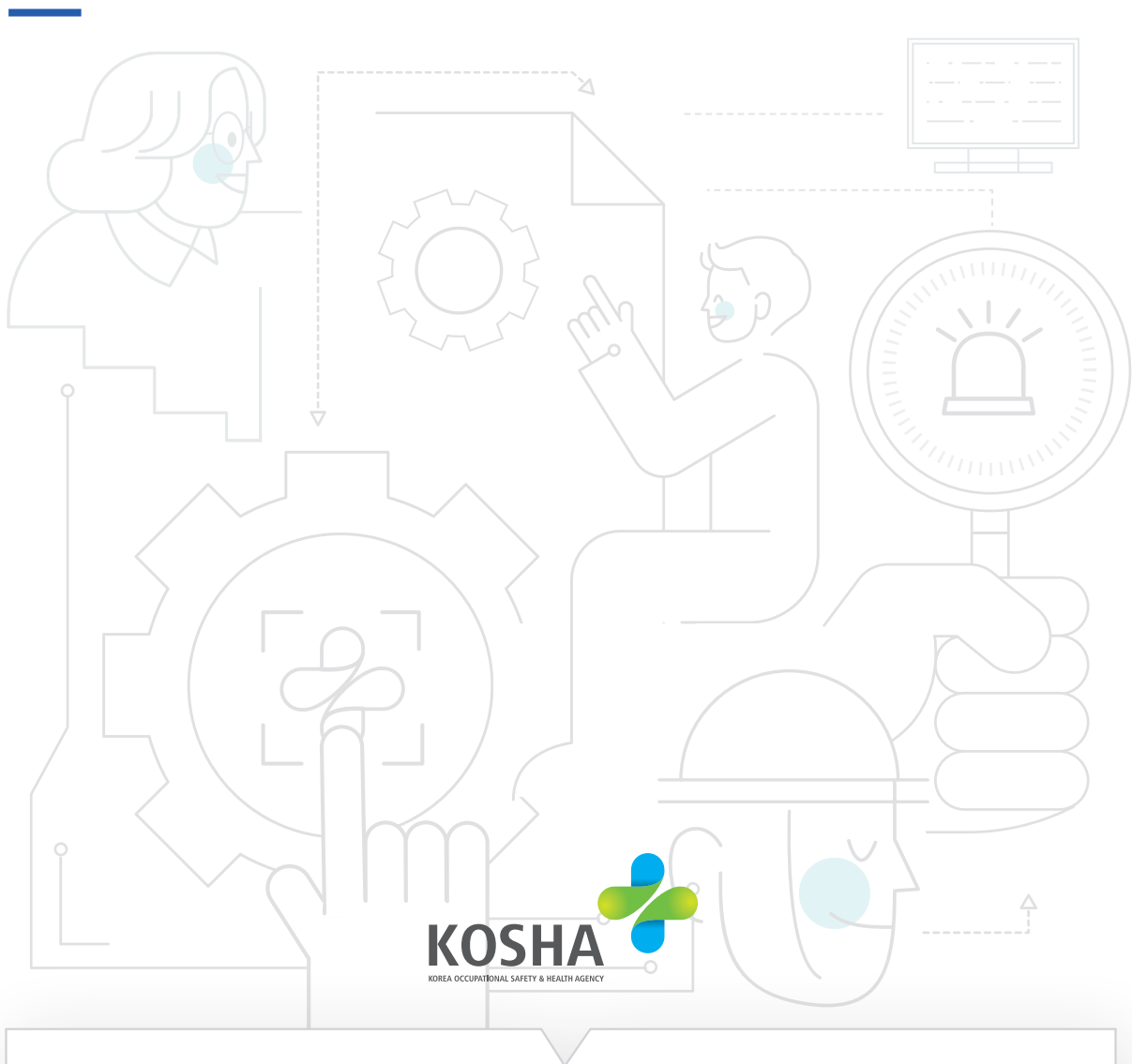
Establishing Safety and Health Subject for Industrial-Workers-To-Be

- To that end, since last February, both organizations have been making an effort to establish the standards to create educational curriculum by NCS occupation as well as to create and distribute standard textbooks (4 types) and educational content.
- To provide needs-based tailored training in occupational safety and health, there will be an advancement of the guidelines to introduce safety and health training and new subjects to help vocational instructors build capability through risk analysis by types of occupation.
- President AHN, Jong-ju of KOSHA said, "This MOU signing has laid the foundation to reduce occupational accidents for the new workers. I hope this translates into safety at workplaces equals comfort for our citizens."



KOSHA NEWS

Protecting Worker's Life and Health



Published by

Korea Occupational Safety and Health Agency

400 Jongga-ro, Jung-gu, Ulsan,
44429 Republic of Korea

Tel. +82 52 7030 745

Fax. +82 52 7030 326

E-mail. overseas@kosha.or.kr

Web(Kr). www.kosha.or.kr

Web(En). <http://www.kosha.or.kr/english/index.do>