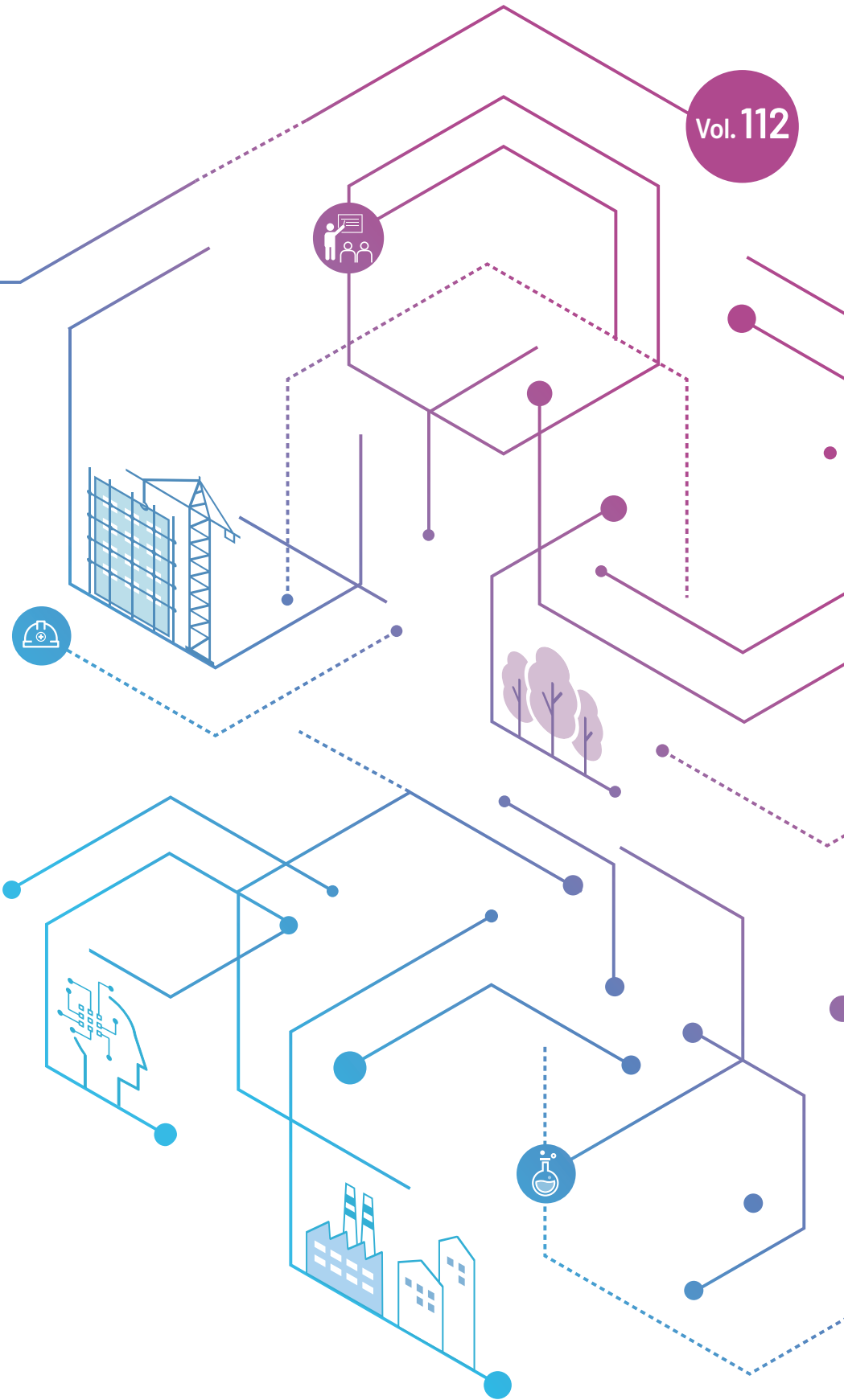


Vol. 112

KOSHA NEWS

AUGUST 2021

Protecting Worker's
Life and Health



Contents

In 2021, what's new in KOSHA?

[Projects in Accordance with Regulations and Policies]

Timely Response to Core Issues of Occupational Health	02
Intensive Control of 10 Most Toxic Substances	04
Chemical Substance Exposure Notification Project	06
Support for Risk Factor Survey for Work-related Musculoskeletal Disorders (WMSDs)	07
Financial Support to Cover Health Checkup Costs for Each Occupation	08
Intensive Management of Workers with High Risk of Death due to Overwork (Death from Cerebrovascular Disease)	09
Provision of Masks for Outdoor Workers	10
Follow-up Management for Chemical Accident Warning System through "Patrol Program"	11
Simplification of Technical Guidance on Fire/Explosion Accident Prevention for Small- and Medium-sized Enterprises (SMEs)	12
Provision of Support for the Formation of a Safety and Health Management System	13

[Education and Innovation Projects]

Complete Reorganization of KOSHA's Education Program	14
Development and Distribution of Safety and Health Program	15

In 2021,

What's new in KOSHA?

This year, KOSHA extensively reorganize its businesses in order to better the working environment for the safety and wellbeing of workers. Major Projects of KOSHA come in four(4) categories :

1. Projects to Reduce Fatalities
2. Financial Support and Contracted Projects
3. Projects in accordance with Regulations and Policies
4. Education and Innovation Projects

In the August issue of KOSHA NEWS, we introduce rest of Regulations and Policies projects following the June Issue. In addition, we touch the Education and Innovation Projects as well.

Projects in Accordance with Regulations and Policies

Timely Response to Core Issues of Occupational Health

Assistance for the Ministry of Employment and Labor (MOEL) and responses to issues related to occupational health

Program

Timely Response to Core Issues of Occupational Health (Assistance for the MOEL, etc.)

Major changes

---◇ Number of cases: 6,000

* Including safety and health assessments and assurance for projects employing subcontractors (1,000 periodical projects)

---◇ Details

- **Assistance for the MOEL, etc.:** support for on-site joint inspection and document review for matters requested by government and public institutions such as the MOEL

* Including guidance and inspection to prevent outbreaks and transmission of COVID-19 and support for the implementation and review of prevention plans

- **Responses to other occupational health issues:** proactive responses to and measures for occupational health issues by cause, period, and region

* In cases where an occupational health issue emerges, KOSHA establishes a response guideline and distributes it to affiliated institutions.

- **Occupational health expert council:** a meeting with a group of experts with the MOEL, KOSHA, and Health Center for Workers to share issues on occupational health, including cases of suspected occupational disease (twice a year, affiliated institutions)

- **Occupational health expert council:** a meeting of occupational health experts with the MOEL, Korea Occupational Safety and Health Agency (KOSHA), and Workers' Health Center (twice a year, affiliated institutions)



Timely Response to Core Issues of Occupational Health

Program

Timely Response to Core Issues of Occupational Health (Assistance for the MOEL, etc.)

Major changes

- **Selection of model workplaces for workers' health promotion activities:** Workplaces for health promotion activities are evaluated by internal and external experts, and the selection committee finalizes the decision (headquarters and affiliated institutions).
- **Development of occupational health guidelines:** Experts with the MOEL, KOSHA, and other relevant institutions select topics on occupational health and conduct surveys on relevant issues in order to take measures for management (headquarters).
- **Review on feasibility of regional monitoring system for addictive disorder:** verification of the regional addictive disease monitoring system, which was in operation for four years (2017-2020) on a trial basis, to identify the future direction of the project (headquarters)
- **Development of infectious disease prevention guidelines and evaluation tools:** development of a self-assessment tool for infectious disease prevention in workplaces based on consideration of work processes and nature of the work (headquarters)

Intensive Control of 10 Most Toxic Substances

Inspection of control of 10 most toxic substances

Program

Intensive Control of 10 Most Toxic Substances

Major changes

- Selection of 10 most toxic chemical substances that cause serious health problems (acute toxicity, occupational cancer, etc.) and are handled by workers at many workplaces

* 10 toxic substances :

1. methyl alcohol, 2. dimethylformamide, 3. N,N-dimethylacetamide, 4. perchloroethylene, 5. acrylonitrile, 6. trichloroethylene, 7. hexavalent chromium compounds, 8. cadmium, 9. lead, and 10. formaldehyde

- Selection criteria

- 1 Workplace with many workers diagnosed with occupational diseases (D1) and requiring close observation (C1)
 - 2 Workplaces that could be made part of the Chemical Substance Exposure Notification Program
 - * Dimethylformamide, N,N-dimethylacetamide, perchloroethylene, acrylonitrile, and trichloroethylene
 - 3 Workplaces wishing to participate in the program when providing advance notice of business sites, etc.
- The headquarters distributes the workplace list at the beginning of the year, and affiliated institutions update the database.

First round of support (inspection of chemical substance control)

- A two-member support team, if possible, to inspect each workplace and suggest key public health measures*

* Remove chemical substances → Replace chemical substances → Isolate (block or seal) → Install or upgrade ventilation systems → Wear protective gear or upgrade management systems by setting priorities



Intensive Control of 10 Most Toxic Substances

Program

Intensive Control of 10 Most Toxic Substances

Major changes

- Upholding of workers' right to know through the operation of the Chemical Substance Exposure Notification Project
- Introduction to KOSHA projects when visiting a workplace, including the Safety Investment Innovation Program* and identification of demand for workplace improvements

* Safety Investment Innovation Program (workplace improvement), Workers' Health Centers (health management), Foothold for Health Program (financial support for checkups and special exams), professional consulting/education, etc.

---◇ Management tailored to each workplace

- In cases where the working environment is deemed to be poor or the result of the working environment assessment is questionable, traceability management is carried out.
- Participation in the program by revisiting when it seems necessary to work in relation to other programs

Chemical Substance Exposure Notification Project

Support for chemical substance exposure notification service

Program

Chemical Substance Exposure Notification Project

Major changes

---○ Installation of a chemical analysis center (in two zones)

- Installation of two additional chemical analysis centers to expand the Chemical Substance Exposure Notification Service

* The chemical analysis centers will be installed jointly in buildings of public institutions.

---○ Voluntary application guidelines and advertising

- **Project guidelines:** distribution of guidelines to workplaces that handle the substances (organic solvents) subject to analysis using the work environment monitoring database and making of efforts to discover new workplaces that also handle such substances

- **Meeting:** meeting held to promote the project for disaster prevention organizations such as organizations specialized in occupational health (project purpose, areas requiring support, implementation procedures, and possible ways of cooperation)

---○ Procedure of Chemical Substance Exposure Notification Service

Step 1 Affiliated institutions identify candidates eligible for the service, form partnerships, and encourage the candidates to apply for the service.

Step 2 Affiliated institutions give instructions on the sampling procedure, provide the sample collection kit, and collect signed informed consent forms.

Step 3 Applicants who apply for the service voluntarily send the sample in a self-addressed package to the regional analysis center. (If a need arises while other KOSHA program is proceeded, the person in charge of the program OR applicants could send the sample directly to the analysis)

Step 4 The regional analysis center digitalizes the analysis results within 14 days after sample registration so that the applicants can access the data online (kosha.or.kr/selfcheck).

Step 5 When necessary, the applicant can apply for and receive a consulting service after checking the analysis results, which is provided under the Timely Response to Core Issues of Occupational Health Project.

* The consulting service is provided only for the 10 most toxic substances.



Support for Risk Factor Survey for Work-related Musculoskeletal Disorders (WMSDs)

Risk factor survey conducted by institution undertaking the project

Program

Support for the Health Management of Vulnerable Groups, Including Essential Workers (Support for Risk Factor Survey of Work-related Musculoskeletal Disorders and Related Reforms)

Major changes

Support for risk factor survey and reforms

- **Financial support:** KRW 463,000 per survey
- **Surveyor:** selection of surveyor for each zone among applicants and signing of contract
- **Selection of candidates:** screening and selection of workplaces to receive support
- **Survey:** risk factor survey conducted in accordance with the guidelines issued by the Ministry of Employment and Labor and the KOSHA Guide, in order of:

* Preliminary survey → main survey → report preparation → presentation of survey results

For the main survey

- 1 Workplace conditions (work facilities, processes, workload, work speed, etc.)
 - 2 Work requirements (work duration, posture, method, movement, etc.)
 - 3 Symptom survey (presence of WMSD symptoms)
- **Kit distribution:** distribution to workers at risk of WMSDs and signing of handover receipt
 - **Presentation of results:** visit to workplace within 10 days after the main survey and presentation of the survey results, including results of the risk factor survey, symptom analysis, measures for workplace improvement, etc.
 - **Workers with symptoms:** follow-up management by sending the list of workers with symptoms given by the surveyor every month to the local Health Center for Workers

[Project procedure]



Selection of surveyor	Application for support	Selection of workplaces	Risk factor survey and distribution of protective kits	Presentation of results and payment	Management of workers with symptoms
Relevant institution	Workplace	Relevant institution	Outsourcing institution	Relevant institution	Health Center for Workers

Financial Support to Cover Health Checkup Costs for Each Occupation

Support for medical costs of essential workers who are at high risk of work-related diseases

Program

Support for the Health Management of Vulnerable Groups, Including Essential Workers (Support for Health Checkup Cost by Job Type)

Major changes

Objective

- Support for health checkup costs by job type for essential workers who are highly vulnerable to work-related diseases as their work environments have deteriorated and workloads increased due to COVID-19

Budget

- KRW 3.35 billion (for roughly 59,000 workers)

Eligibility

- Workplaces employing courier drivers, home delivery workers, proxy drivers, and sanitation workers (fewer than 20 people) with industrial accident compensation insurance

Details

- Health examinations appropriate for the nature of the given type of work and work-related diseases
- Consolidation of the project through partnership between KOSHA and specialized health examination institutions
- Follow-up management through in-depth health checkup programs at the Health Center for Workers in accordance with the health examination results

Procedure (draft)



Guidance	Selection of workplace eligible for support	Health examinations for workers in all job types	Payment	Follow-up management
KOSHA	KOSHA	Specialized health examination institution	KOSHA	Health Center for Workers

* A detailed plan will be drawn up separately.

Intensive Management of Workers with High Risk of Death due to Overwork (Death from Cerebrovascular Disease)

Support for thorough In-depth medical examinations and follow-up management for workers with high risk of death

Program

Support for the Health Management of Vulnerable Groups, Including Essential Workers (Intensive Management of Workers with High Risk of Death due to Overwork [Death from Cerebrovascular Disease])

Major changes

---◆ Objective

- To provide workers at high risk of dying due to overwork (death from cerebrovascular disease) due to long hours, work stress, or other factors with in-depth health examinations and intensive management to prevent work-related diseases

---◆ Budget

- KRW 3.276 billion (for roughly 15,000 workers)

---◆ Eligibility

- Workers with a high probability of developing cerebrovascular disease among those with underlying medical conditions, according to the results of general health examinations

---◆ Details

- Selection of workers eligible for intensive management based on the results of general health examinations
- Provision of in-depth health examinations for people at high risk of dying from overwork
- Provision of health management programs jointly with the Health Center for Workers and medical institutions

---◆ Procedure (draft)



Advertising and introduction of program	Application for participation in program (workplaces and workers)	Provision of in-depth health examinations (medical institutions)	Provision of health management programs (Health Center for Workers and medical institutions)
---	---	--	--

* A detailed plan will be drawn up separately

Provision of Masks for Outdoor Workers

Changes in program budget and eligibility

Program

Provision of Masks for Outdoor Workers

Major changes

---◇ No. of masks: 3.8 million

* Masks are purchased and technical materials are produced and distributed to affiliated institutions by KOSHA.

---◇ Distribution: 20 masks per worker

- No. of masks distributed to each workplace = No. of workers with occupational health and safety insurance coverage x 20 (masks/person)

* Masks are distributed flexibly to construction workers and anyone working outdoors according to the given working conditions.

---◇ Eligibility: workplaces with fewer than 50 outdoor workers* (190,000 workers in total)

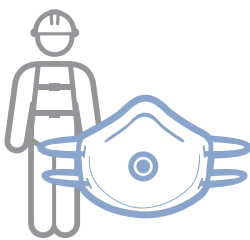
* For the construction industry, businesses valued at less than KRW 5 billion

- Major types of workers to receive support: construction workers, sanitation workers, and essential workers involved in providing home delivery and courier services

---◇ Distribution method: distribution conducted by KOSHA-affiliated institutions and outsourcing services

- Construction: Safety and Health Guards on duty for KOSHA-affiliated institutions

- Other occupations: distribution conducted by selected outsourcing service providers



Follow-up Management for Chemical Accident Warning System through “Patrol Program”

On-site patrol program

Program

Chemical Accident Warning System

Major changes --- Follow-up management by grade

- The “Patrol Method” is used to provide follow-up management for each workplace by grading workplaces according to the Guidelines on the Implementation of the Process Safety Management (PSM) Workplace Risk Alert System.
- Follow-up management in each region is carried out according to the alert level of the Guidelines on the Implementation of the PSM Workplace Risk Alert System to create an atmosphere conducive to disaster prevention in the region and strengthen preventive activities at local labor offices.
- On-site patrol for disaster prevention is conducted, and workplaces with disaster risks are advised to eliminate risk factors under the supervision of the Ministry of Employment and Labor.



Simplification of Technical Guidance on Fire/Explosion Accident Prevention for Small- and Medium-sized Enterprises (SMEs)

Simplification of performance reporting and participation in safety investment innovation program

Program

Provision of Technical Guidance to SMEs on Fire/Explosion Prevention

Major changes

- ◇ Selection of businesses that can participate in the Safety Investment Innovation Program (improvement of high-risk industries)
 - Financial support to improve risk processes of Ppuri industries (casting and plastic molding businesses)
- ◇ Simplification of and focus on areas requiring technical guidance
 - Plans for the development and utilization of a checklist-type project performance report (headquarters)



Provision of Support for the Formation of a Safety and Health Management System

Termination of both KOSHA/OHSAS 18001 Certification and conducting of contactless review

Program

Provision of Support for the Formation of a Safety and Health Management System (Manufacturing Businesses, etc.)

Major changes

---◇ **Decrease in no. of cases (2,500 → 2,240)**

- Excluding workplaces that completed the transition from KOSHA 18001 to KOSHA-MS

---◇ **Termination of KOSHA/OHSAS 18001 dual certification**

- The deadline for OHSAS 18001-certified workplaces to convert to ISO 45001 is September 11, 2021. A review of each institution for certificate renewal should be conducted after the termination of the dual certification.

---◇ **Plan for conducting a contactless review along with a fact-finding review**

- A contactless fact-finding review is to be held as well, depending on the status of the COVID-19 situation at the time.

---◇ **Application of KOSHA-MS performance evaluation model on a trial basis**

- Structural performance and on-site operability evaluation of the safety and health management system conducted in the case of follow-up and renewal review of businesses with 1,000 or more employees.



Education and Innovation Projects

Complete Reorganization of KOSHA's Education Program

Reorganization with a focus on fatality prevention programs

Program

Supervision of the Education Program

Major changes

--- Reorganization: focus on fatality prevention programs

- Reorganization of the education program for each hierarchical group (management and executives, laborers, etc.) with a focus on fatality prevention programs (intensive education for fatality prevention, legal and policy education, and basic education)
- **Target:** 425,000 people (down 75,000 people compared to 500,000 in 2020)

[Education courses]

(Unit: students)

Classification	Safety and health education				Support for basic safety and health education
	Total	Education with a focus on fatality prevention*	Legal and policy education**	Basic education***	
Students	425,000	136,000	45,000	244,000	130,000

* Education with a focus on fatality prevention: education on on-site patrols, prevention of four major types of fatal accidents, safety and health education (for special types of workers and essential workers), etc.

** Legal/policy education: education for employers of the companies that have completed the training required for company/business owners to receive worker compensation insurance, education for business owners on risk assessment, education for CEOs and managers of high-risk workplaces, training for safety and health management personnel, etc.

*** Basic education: education for workers vulnerable to occupational accidents, education for elderly and female workers, interactive safety education, in-house education, mobility and safety education, etc.



Development and Distribution of Safety and Health Program

Contactless programs and increase in on-site delivery service

Program

Development of Safety and Health Programs

Major changes

---◇ **Increase: development and distribution of safety and health programs and program diversification**

- **Increase in programs:** program diversification to meet the demand for contactless programs due to the spread of COVID-19 and acceleration of digitalization

* 577 types in 2020 → 617 types in 2021

---◇ **Expansion of program-related on-site delivery service to include all workplaces requiring technological support (150,000 workplaces) in addition to patrol inspection workplaces (60,000 workplaces)**

- **Increase in support:** distribution of customized programs for high-risk workplaces in relation to KOSHA's major programs

* Gradual expansion depending on the budget

---◇ **New: operation of database of safety and health-related big data built in 2020 and development of new services**

- **Database operation:** operation and management of existing program database, digital archives, e-libraries, and image database

* 9,500 items of metadata, 450 archives, 3,400 e-libraries, over 100,000 items of image data

- **New:** development of online mailing service and customized material curation system



Published by

Korea Occupational Safety and Health Agency
400 Jongga-ro, Jung-gu, Ulsan,
44429 Republic of Korea

Tel. +82 52 7030 745

Fax. +82 52 7030 326

E-mail. overseas@kosha.or.kr

Web(Kr). www.kosha.or.kr

Web(En). www.kosha.or.kr/english/index.do

Copyright © 2019 by KOSHA For right of reproduction or translation, application should be made to the International Cooperation Center, Korea Occupational Safety and Health Agency.

