



Thailand



Occupational Safety, Health and Environment *in* Thailand

Prepared by:

Mr.suriyawut THONGTHIANG

Occupational Safety and Health center, Region 6

Department of Labour Protection and Welfare, Thailand

1 National Background Information



Thailand is located in Southeast Asia:

- Area of 513,000 km²
- Total population of 67 million in 2015 (approx. 70% in labour force)
- A newly industrialized country, but agricultural sector is still the foundation of the country economy.



The capital and largest city of Thailand is Bangkok. It is also the country's centre of political, commercial, industrial and cultural activities. Bangkok is known in Thai as "Krung Thep Mahanakorn," or, more colloquially, "Krung Thep."

2 Current Situation and Statistics on Occupational Safety, Health and Environment

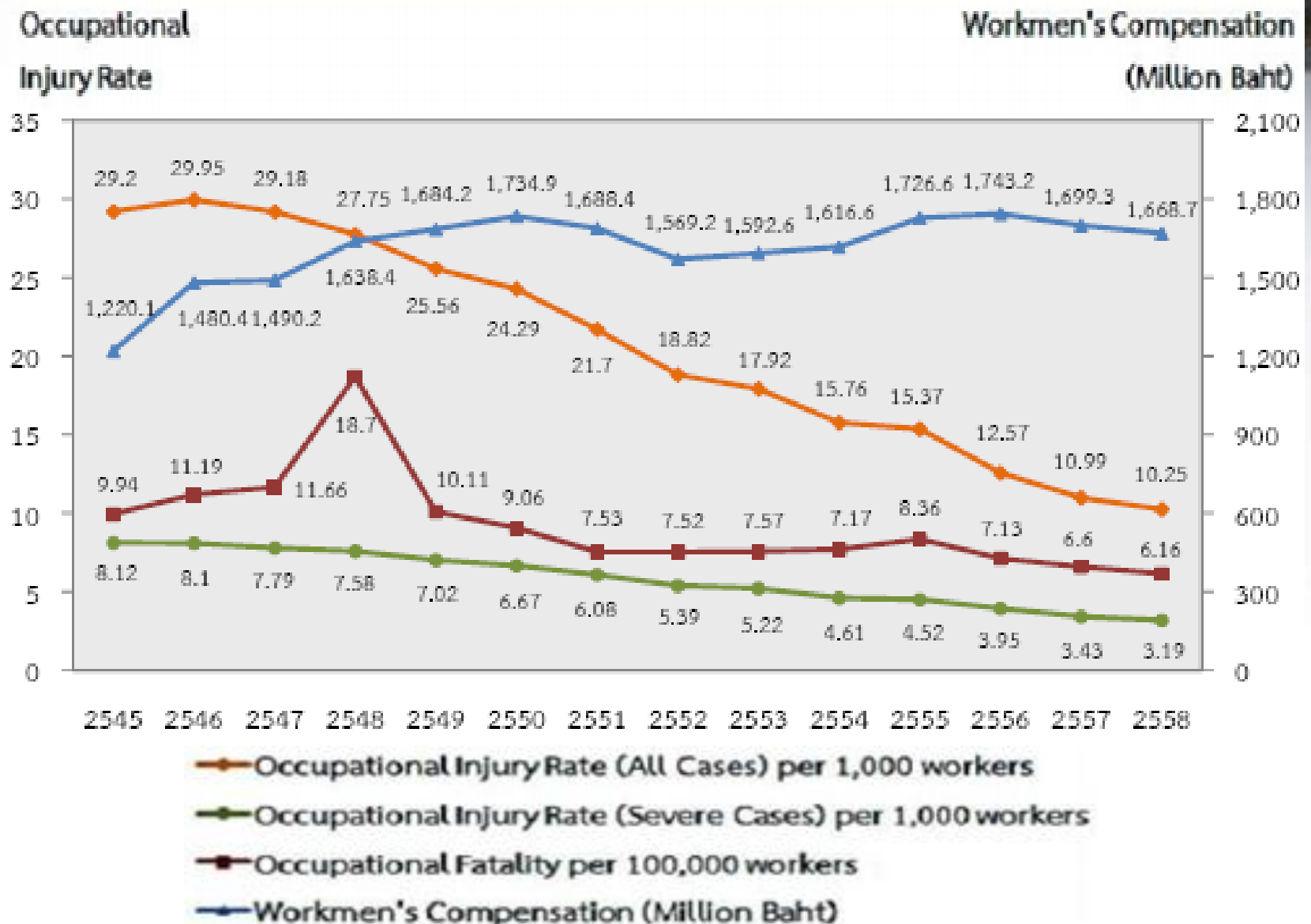


Occupational Accident Statistics during 2002 - 2015



Year	No. of Decided Cases							Occupational Injury Rates				Amount of Workmen's Compensation (Million Baht)
	No. of Employees	Death (1)	Disability (2)	Loss of Organ (3)	Leave Work > 3 days (4)	Leave Work < 3 days (5)	All Cases (1-5)	*Severe Cases (1-4)	**All Cases (1-5)	**Severe Cases (1-4)	***Fatal Cases (1)	
2002	6,541,105	650	14	3,424	49,012	137,879	190,979	53,100	29.20	8.12	9.94	1,220.14
2003	7,033,907	787	17	3,821	52,364	153,684	210,673	56,989	29.95	8.10	11.19	1,480.36
2004	7,386,825	861	23	3,775	52,893	157,982	215,534	57,552	29.18	7.79	11.66	1,490.19
2005	7,720,747	1,444	19	3,425	53,641	155,706	214,235	58,529	27.75	7.58	18.70	1,638.37
2006	7,992,025	808	21	3,413	51,901	148,114	204,257	56,143	25.56	7.02	10.11	1,684.23
2007	8,178,180	741	16	3,259	50,525	144,111	198,652	54,541	24.29	6.67	9.06	1,734.90
2008	8,135,606	613	15	3,096	45,719	127,059	176,502	49,443	21.70	6.08	7.53	1,688.35
2009	7,939,923	597	8	2,383	39,850	106,598	149,436	42,838	18.82	5.39	7.52	1,569.19
2010	8,177,618	619	11	2,149	39,919	103,813	146,511	42,698	17.92	5.22	7.57	1,592.63
2011	8,222,960	590	4	1,630	35,709	91,699	129,632	37,933	15.76	4.61	7.17	1,616.57
2012	8,575,398	717	19	1,818	36,165	93,106	131,826	38,720	15.37	4.52	8.36	1,726.58
2013	8,901,624	635	28	3,036	31,419	76,776	111,894	35,188	12.57	3.95	7.13	1,743.16
2014	9,132,756	603	11	1,463	29,254	68,903	100,234	31,331	10.99	3.43	6.60	1,699.32
2015	9,336,317	575	6	1,324	27,845	65,924	95,674	29,750	10.25	3.19	6.16	1,668.71

Trend of Occupational Injury Rates By Severity and Workmen's Compensation, 2002-2015





3 National Policies, Strategies, and Master Plans on Occupational Safety and Health



OCCUPATIONAL SAFETY AND HEALTH IN THAILAND





**The Government here by declares
a policy on**

**“ Decent Safety and Health for Workers ”
to be National Agenda to achieve seven
goals as follows:**



- 1. To ensure an occupational security for workers under the National Master Plan on Occupational Safety, Health and Environment,**
- 2. To provide the working environment for workers in all sectors conforming to the safety standard,**
- 3. To raise the worker's awareness and enhance knowledge on occupational safety, health and environment,**



- 4. To decrease a rate of occupational injuries of the workers,**
- 5. To provide the accessibility of the information on occupational safety, health and environment of workers,**
- 6. To conduct the systematic surveillance on occupational safety and health for workers,**
- 7. To create a safety culture at work for workers.**



The Royal Thai Government recognizes that human resources are the important part of the new manufacturing and economical system. Therefore, the scope for labour development and relevant policy which included the policy on occupational safety and health (OSH) has been set up for the following objectives:



- 1. Labour's work security has been promoted under the National Master Plan on Occupational Safety, Health and Environment**
- 2. Labour in all sectors work under safe environment**
- 3. Workers' awareness and knowledge on OSH are improved**
- 4. Occupational accident and injury rates are continuously reduced**



5. OSH information is fully accessible by the workers

6. Workers are protected under effective health and safety surveillance system

7. Safety culture is built-up among workers



4 Occupational Safety and Health Law



4.1 OCCUPATIONAL SAFETY, HEALTH AND ENVIRONMENT ACT B.E. 2554 (A.D. 2011)

4.2 MINISTERIAL REGULATION ON THE PRESCRIBING OF STANDARD FOR ADMINISTRATION AND MANAGEMENT OF OCCUPATIONAL SAFETY, HEALTH AND ENVIRONMENT



- 1) Safety in confined spaces**
- 2) Safety in relation to ionizing radiation**
- 3) Safety in the prescribing of criteria and method of conducting health check up of employees**
- 4) Safety in relation to diving work**
- 5) Safety in relation to heat light and noise**



- 6) Safety in Standard for occupational safety, health and working environment administration and management**
- 7) Standard in relation to construction work**
- 8) Safety in relation to machinery, crane and boiler,**
- 9) Safety in relating to fire protection and control**



10) Safety in relation to fire prevention and control,

11) Working safety relating to protection and prevention of fire

12) Safety in relation to hazardous chemicals

13) Safety in relation to electrical work

Enforcement



OSH inspectors shall have authority to enter factories to inspect working conditions and environment; if OSH inspectors found that the employer has violated or failed to comply with the Labour Ministerial Regulation in OSH. OSH inspectors shall have the power to issue a written order to the employer to improve working conditions and environment within a specified period of time.



If the employer violates an order issue by OSH inspectors the employer shall be a penalized with

- imprisonment of not more than one year**
- a fine not exceeding 200,000 Bath**
- or both**

5 Organizations involve in Occupational Safety, Health and Environment



Government Agencies

- 1. Department of Labour Protection and Welfare (DLPW)**
- 2. Ministry of Public Health**
- 3. Ministry of Industry**

Department of Labour Protection and Welfare (DLPW)



OSH Bureau has the following authorities and functions:

- 1. Set up and develop OSH standards,**
- 2. Monitor and supervise employers, workers, related individuals, juristic persons or relevant agencies to comply with the OSH laws or standards,**



- 3. Provide services on authorization, registration and supervision of activities or services prescribed under the OSH laws or standards,**
- 4. Develop a system for OSH protection, inspection and control measures,**
- 5. Develop an OSH information technology system and network,**



- 6. Conduct researches or studies to identify OSH problems and to develop appropriate measures for further adoption of OSH laws or standards,**
- 7. Develop OSH network and promote for participation,**
- 8. Coordinate or support the functions of relevant agencies, as been assigned.**



6.Occupational Safety, Health and Environment Projects, Activities and Envents are:



- 1. Enhancing OSH knowledge of employers and employees through various activities, such as: training seminars, exhibition and public relations activities and safety exhibitions.**
- 2. Investigation causes of unsafe working environment and unsatisfactory working conditions, recommending preventive, control and improvement measures.**





- 3. Testing of work physiology and improving workplace ergonomics.**
- 4. Developing and improving OSH in SMEs and informal sector.**
- 5. Collecting, processing and disseminating OSH information.**
- 6. Conducting OSH research and study.**
- 7. Assisting implementation of OSH activities in workplace.**





Activities of OSH Bureau Center

- Promotion of OSH Bureau Management
- Zero Accident Campaign
- Reduce occupational accident in
- Establishments which have a high rate of occupational accidents.
- Provide industrial Hygiene Services
- Developing and improving OSH in SMEs and agriculture (plantation)
- Enhancing OSH knowledge of employers and employees
- Disseminating OSH information
- Enforcement law



6 Occupational Safety, Health and Environment Projects, Activities and Events



Project title:

“Monitor and inspection employers ”

Occupational Safety and Health center, Region 6

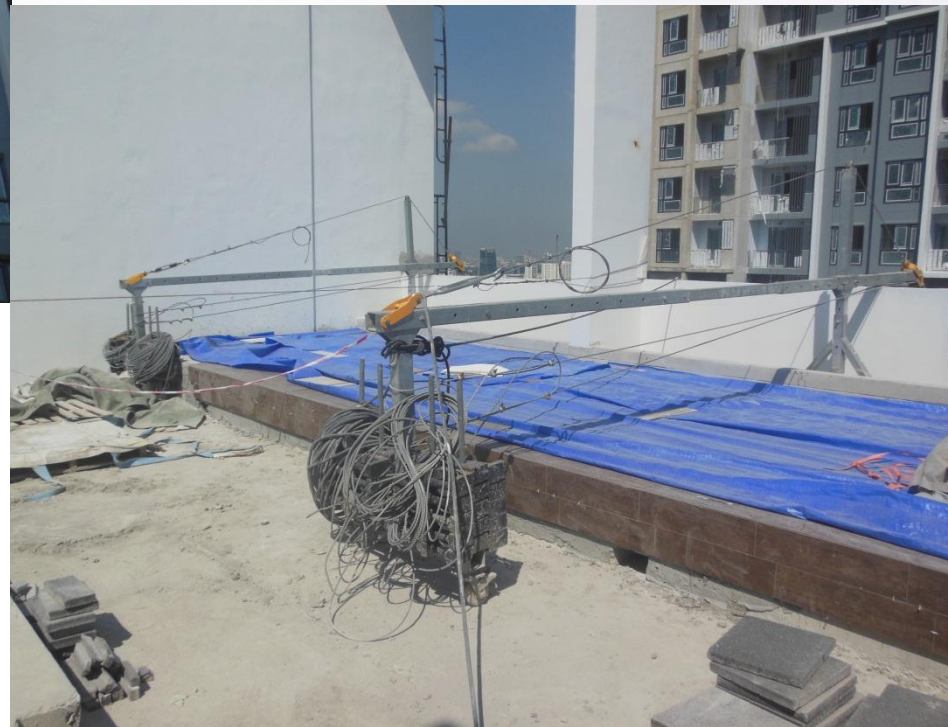


Construction work



Inspection Machinery











U

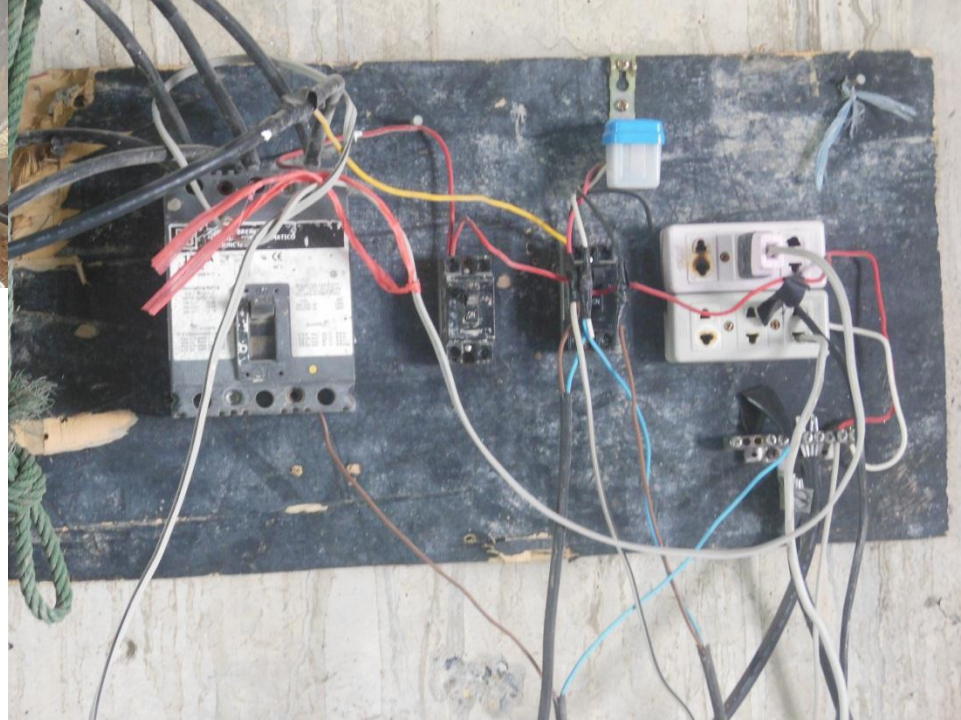
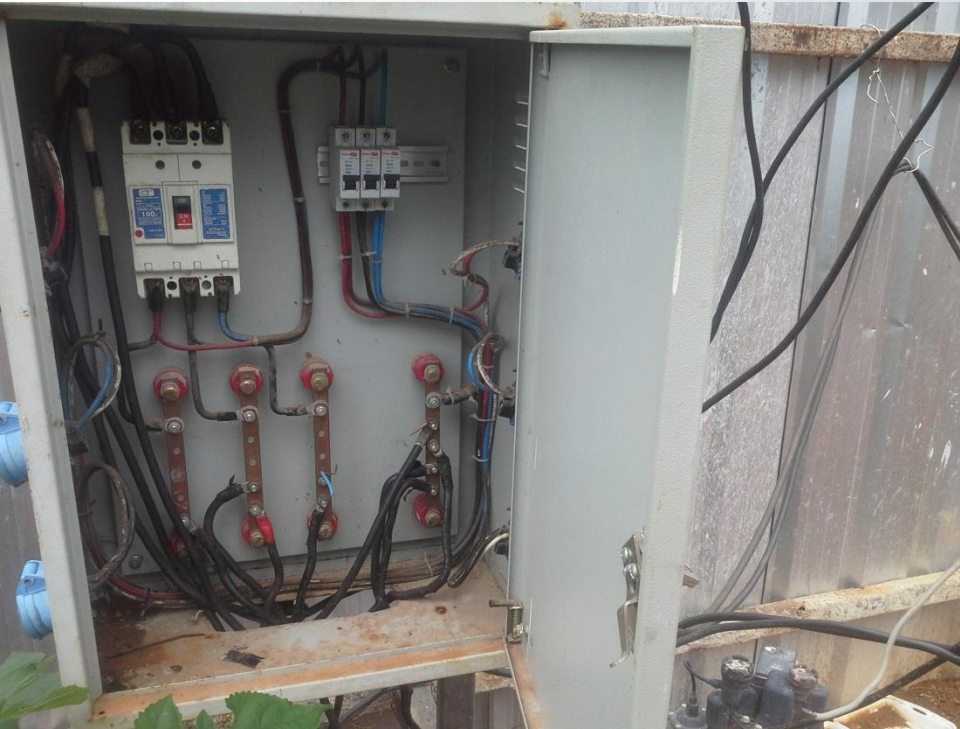
กระแสไฟฟ้า

V

High working



Electrical system



Factories and SME



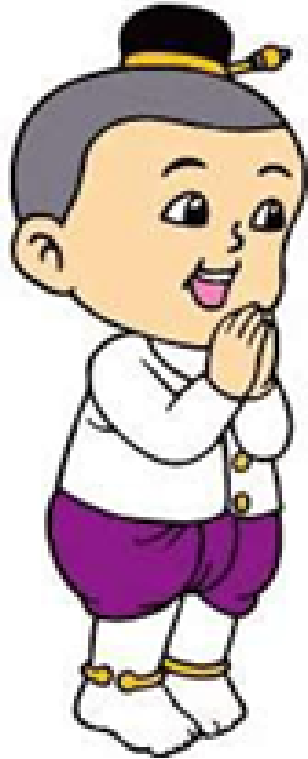












The end
Thank you very much

