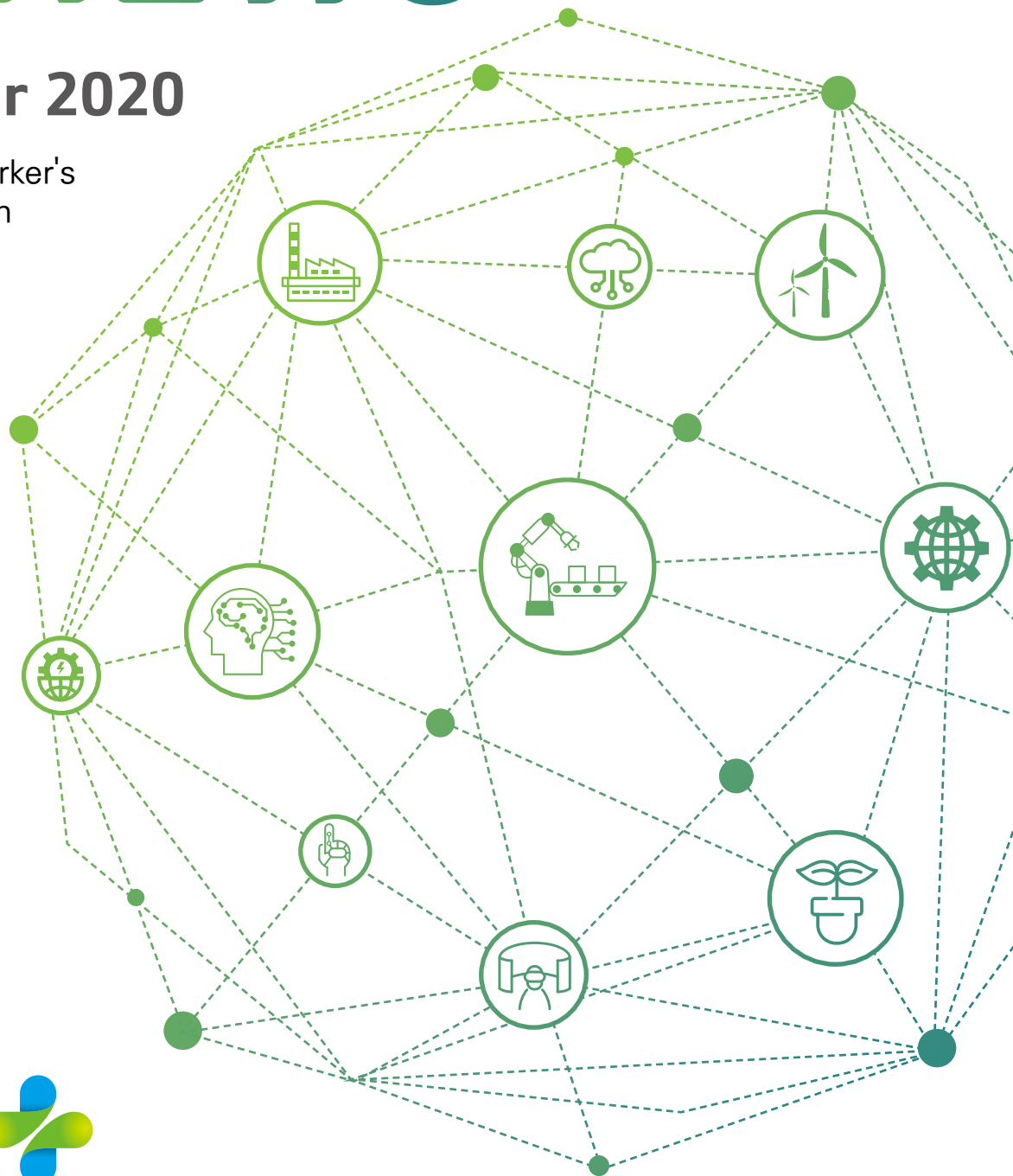


vol.
107

KOSHA NEWS

October 2020

Protecting Worker's
Life and Health





Contents

News	03	Taking care of worksite with risks of suffocation through on-site visit services
	05	Take Non-Face-to-Face training for construction business owners in a safe manner
	07	14 Businesses selected for outstanding health promotion activities for employees in 2020
	09	More OSH patrol cars for more efficient operation
	10	Keep workplaces safe together with “Oh My Girl,” K-Pop girl group

OSHFI	12	Making ventilation management easier for Workplaces with 3C risks(Concentrated/Confined/Congested)
--------------	----	--

Safety and Health at Work, **SH@W**

Prevention measure for COVID-19

Taking care of worksite with risks of suffocation through on-site visit services

Pilot project of “One-Call for Suffocation Prevention” for the region of Gyeonggi-do



A comprehensive service program designed to fundamentally prevent fatal accidents at confined spaces, including manhole, water and sewage, septic tank and wastewater treatment facilities, will be implemented in the region of Gyeonggi-do as a pilot project.

From September 28th, the KOSHA starts operating the service called “One-Call for Suffocation Prevention” aiming to dispatch experts to pay a door-to-door visit to the worksites for checks of on-site risks and provide preventive equipment when a business with confined work spaces makes a request by a phone call.

- ✚ ✚ When a business conducting confined-space works makes a request to the KOSHA through a phone call, experts in related fields are to visit the business site at the schedule convenient for the business to measure the concentration of oxygen and harmful gas and provide safety training for workers.
- ✚ ✚ Moreover, if equipment for prevention of suffocation accident, such as gas concentration meter, ventilation fan and air supplied respirator, is required, the KOSHA brings and recovers them to and from the site, and it also conducts the training on how to handle them safely when leased.

※ Equipment lease period: Within 5 days subject to mutual agreement, and prior approval required for extension

This service was developed as a countermeasure to address the problems where fatal accidents occur to workers engaging in duties at confined work spaces without preventive equipment because of failure to perform safety check or lack of financial means.

This year, the service will be implemented at 18 locations* in Gyeonggi-do as a pilot project, and the on-site service will be offered for free when contacted through the main number, ☎1644-8595.

* (Service Areas) Gwangmyeong-si, Gwangju-si, Gunpo-si, Seongnam-si, Suwon-si, Siheung-si, Ansan-si, Anseong-si, Anyang-si, Yangpyeong-gun, Yeosu-si, Osan-si, Yongin-si, Uiwang-si, Icheon-si, Pyeongtaek-si, Hanam-si and Hwaseong-si of Gyeonggi-do

✚ ✚ The businesses at the areas not included in the above may lease the equipment by visiting the nearest branch offices of the KOSHA, and the service is scheduled to be expanded throughout the country, from next year.

Jang-jin Ryu, the Director General of the Office of General OSH Programs, said, “Works at confined spaces are prone to accidents due to the lack of risk awareness and financial burden of preparing preventive equipment because such works are performed on a temporary or intermittent basis.” He added, “We aim to contribute to elevating the safety at the worksites and decreasing fatal accidents by expanding and organizing this pilot service as a regular project from next year.”



Take Non-Face-to-Face training for construction business owners in a safe manner

Bonus bidding points granted
on public construction works after taking the training



The KOSHA offers the “Training for Business Owners (Managers) to Prevent Fatal Accidents at Construction Sites,” an annual training program for business owners of general construction companies, via internet as a remote training this year in order to prevent COVID-19 from spreading.

Eligibility for the training extends to the owners of top 1,000 civil/construction businesses based on the ranking of the amounts of construction capability evaluation in the previous year, where the owners take training on prevention of accidents at construction sites for two hours.

++ Main topics of the training include the information on occupational accidents at construction sites, safety leadership, safety and health management system and the role of managers/supervisors.

The first training will be offered from September 21st to October 31st, and the second training will be imparted from November 1st to November 30th, at the Internet Training Center* of the KOSHA.

* Internet Training Center (www.safetyedu.net): Application for internet training > COVID-19 (temporary training) > Training for Business Owners (Managers) on Prevention of Fatal Accidents at Construction Sites

Upon completion of the training, trainees will be given bonus points for “performance evaluation on occupational accident prevention activities,” one of the bonus indexes when tendering for public construction works.

++ The performance evaluation on occupational accident prevention activities represents the data employed as the criteria to select construction businesses with outstanding safety activities.

- ✚✚ The KOSHA receives and evaluates the data on occupational accident prevention activities performed by construction businesses, and provides such data for related agencies, including authorities awarding the contract, to utilize when selecting constructors.

The “Training for Business Owners (Managers) to Prevent Fatal Accidents at Construction Sites” has been conducted as collective training by 27 front-line agencies of the KOSHA across the country. This year, the KOSHA transformed the training into a program via internet and developed necessary data in order to prevent widespread COVID-19 from further proliferation.

At the same time, the KOSHA encourages effective access for users by separating training periods to minimize inconvenience for business owners and give customized guidance to constructors. The KOSHA ensures flawless implementation of the training by promoting the indicators on accidents at construction sites.

Jang-jin Ryu, the Director General of the Office of General OSH Programs, mentioned, “We are dedicated to continue improving and developing related systems in order to encourage construction businesses to engage voluntary and effective prevention activities against occupational accidents.”



14 Businesses selected for outstanding health promotion activities for employees in 2020



The KOSHA selected 14 “businesses with outstanding health promotion activities for employees.”

The selection process for workplaces with outstanding health promotion activities for employees represents a system identifying the outstanding worksites based on evaluation of health promotion activities for employees performed at the sites in order to prevent work-related diseases and promote health of employees.

++ Selections are made twice a year during the first and the second half of the year, and outstanding businesses are selected through on-site visits and deliberation by a selection review committee based on 43 evaluation items, including construction of systems for health promotion, the level of awareness and operation of programs.

Out the final selection of 14 businesses, 11 sites were newly selected*, and 3 sites were extended of their selections**.

* Newly selected businesses (11): △ Ansan Factory of CJ CheilJedang, △ Steel Business Department of Taewoong Co., △ Haesung DS Co., Ltd., △ Dongbu Hospital in Seoul, △ Headquarters of POSCO ICT, △ The 2nd Phase construction Works of 1784 Project by Samsung C&T Corporation, △ New construction of Teheran-ro 237 Development Project by Hyundai E&C, △ Sinnæ SK V1 Center of SK E&C, △ RU1 City SK Leaders View 1 by SK E&C, △ Hynix M16 Ph-1 PJT by SK E&C and △ Megahub Gonjam by CJ Logistics

** Businesses with extended selection (3): △ Incheon Frozen Food Factory of CJ CheilJedang, △ Daejeon Factory of Yuhan-Kimberly and △ Asan Factory of Hyundai Motor Company

++ In particular, newly selected Seoul Dongbu Hospital earned high marks for its operation of “mobile medical center in search of metabolic syndrome” identifying risky groups through evaluation of onset risks for cerebral cardiovascular disease.

- ✚✚ In addition, Asan Factory of Hyundai Motor implemented a prevention program for musculoskeletal disease within the workplace by forming a musculoskeletal disease prevention committee and ergonomic TFT participated by both the management and labor union, which led to continuous reduction of patients with musculoskeletal disease to earn exceptional reviews.

※ Please refer to the attachment concerning outstanding cases of health promotion at 14 business sites.

The businesses selected will be preferential candidates subject to governmental rewards for three years, as beneficiaries of preferential aids for the costs necessary to implement health promotion activities.

Meanwhile, the KOSHA has been selecting the businesses with outstanding health promotion activities for employees since 2011, and the selected businesses can be found from the public notice at the website (kosha.or.kr) of the KOSHA.

The person interested of the KOSHA stated, “We highly anticipate the expertise and skills of the selected businesses with outstanding health promotion activities for employees to be widely utilized as best practices for employees’ health promotion beyond prevention activities against work-related diseases through the entire worksites around the nation.”



More OSH patrol cars for more efficient operation

KOSHA adds 32 more units to reduce occupational fatalities for on-site supports



The KOSHA adopts 32 additional patrol cars for occupational safety to help relevant agencies and engages in full operation of those vehicles from September 10th.

- ++ Occupational safety and health (OSH) patrol cars will be utilized for on-site checks (patrol) and technical guidance focusing on the regions requiring intensive management for fatal accidents, including small-and-medium-sized construction sites and areas concentrated with factories and warehouses.
 - Last August, 27 front-line agencies of KOSHA adopted one vehicle each. This year, additional provision was made to expand the sites subject to checks and to secure prompt technical guidance.

The additional introduction of OSH patrol cars is designed to ensure emergency deployment upon occurrence of serious accidents, such as the fire accident at Icheon Logistics Warehouse in April 2020, and to implement preemptive prevention activities.

- ++ Expedient on-site supports are now fully mobilized as the OSH patrol cars are armed with diagnostic equipment to prevent fire, explosion and suffocation accidents (complex gas meter, ventilation fan and air supplied respirator).
- ++ Specially planned checks* (patrol checks) for construction industry will be extensively expanded from existing 30,000 sites to 60,000 sites.

* With regard to the workplaces found with inadequate safety management during specially planned checks, the KOSHA requests the Ministry of Employment and Labor for inspection of such workplaces.

Doo-yong Park, the President of KOSHA, said, “With introduction of additional OSH patrol cars, prevention for fall accidents at construction sites, accounting for more than half of fatal accidents, as well as on-site response to preventive activities against fire, explosion and suffocation accidents will be significantly enhanced.”

- ++ “We are determined to continue making efforts to diminish fatal accidents by half by 2022.” Park added.

Keep workplaces safe together with “Oh My Girl,” K-Pop girl group

KOSHA produces “SAFE” a safe song and holds challenge events



— The KOSHA launches the “SAFE Campaign” together with “Oh My Girl,” a K-pop girl group, to spread safety culture.

— The KOSHA produced a web-entertainment video featuring Hyo Jung and Seung Hee, members of the group, personally experiencing safety checks at industrial sites, and a safety song called “SAFE” stressing the importance of practicing the safety and complying with safety rules.

Concurrently, the KOSHA also carries out the “SAFE Campaign” where viewers of the video engage in dance challenges imitating the stretching choreography to the safety song.

- ✚ ✚ The “web-entertainment video on safety checks at industrial sites” is composed of the scenes where risk factors, such as trapping and collision, are being detected, followed by safety checks, together with the employees of the KOSHA
- ✚ ✚ “SAFE,” the safety song, is developed in a format of music video and composed of cheerful tempo and the lyrics easily expressing the significance of safety in addition to stretching-based choreography to help anyone quickly sing and dance along.
- ✚ ✚ The “Dance Challenge” will be held where viewers upload their video footage imitating the stretching choreography to the safety song on social media, and winners will be selected from the participants and awarded with prizes and gifts.

— The KOSHA plans to unveil the web-entertainment video on safety checks at industrial sites on September 2nd and the safety song on September 9th through its official homepage, Youtube and social media, followed by the making-film containing the production footages on September 16th.

- ✚✚ The dance challenge with the safety song participated by viewers will be held via official communication channels* of the KOSHA, including the Youtube, for a period of month from September 10th through October 9th.

* Official communication channels of KOSHA: Youtube, Instagram, Facebook, Tweeter and Kakao Story

On the other hand, the KOSHA has been engaging in collaboration works with various K-pop artists under the theme of “Safety” as it produced a stretching gymnastic song together with Min Ah of Girl’s Day in 2012, as well as “Everyone’s Safety” with Na-eun of April in 2017 and “Campaign Song on Social Distancing in Everyday Life” along with Moon Jong-up of B.A.P. this June.

Doo-yong Park, the President of KOSHA, stated, “I sincerely hope that this campaign can bring an opportunity to take another look at the safety issues at workplaces while encouraging everyone to recover energy and vivacity overcoming COVID-19 burnout.” Park added, “We aim to continue promoting various cooperative works and campaigns to further spread safety culture throughout our society as well as industrial sites.”



Making ventilation management easier for Workplaces with 3C risks (Concentrated/Confined/Congested)

KOSHA to develop and distribute “co-S.U.M.,”
a smart evaluation tool for ventilation management

A new program capable of easily managing ventilation will be distributed for the worksites concentrated/confined such as a call center or workplaces requiring close contacts with customers, including customer service centers.

The OSHFI (Director General: Yeon-soo Lee) under the KOSHA developed the “co-S.U.M.,” a smart evaluation tool for ventilation management capable of independently evaluating and managing the ventilation state at work spaces. KOSHA cooperated with JOSH** to develop the ventilation system.

* co-Safe air exchange by Untact and Mobile

** Japan Society for Occupational Health

“co-S.U.M.” is a tool for business sites to manage the ventilation state of their own work spaces, with autonomy.

++ When basic information, including the size of work space, number of employees and working hours, is entered, it presents the level of risk and how to ventilate based on the ventilation state of the workplace.

– The level of risks is divided into 5 steps from “Good” to “Extremely Poor,” and when the level is indicated as “Extremely Poor,” it offers ventilation methods, such as “Keep the windows open consecutively and control the inflow of external air at the air conditioner.”

※ Examples of 5 steps of environmental levels at workplaces

Level	Good (400~800ppm)	Above Average (800~1,000ppm)	Poor (1,000~2,000ppm)	Very Poor (2,000~3,500ppm)	Extremely Poor (Above 3,500ppm)
Ventilation Method	Maintain current state (level of air at average office)	Management required Ventilation ON (10 minutes or longer per hour)	Improvement required Ventilation ON (20 minutes or longer per hour)	Restricted Use Ventilation ON (40 minutes per hour), Verify inflow of external air at air conditioner	Restricted Use (consecutive opening of windows or control of inflow of external air at air conditioner)

“co-S.U.M.” can be accessed and used by anyone through the KOSHA website (www.kosha.or.kr)* for free; especially for workplaces with the 3 risks mentioned above, it is expected to contribute to prevention** of infectious diseases from COVID-19.

* Homepage of KOSHA > About Businesses > Occupational Health > Smart Ventilation Management Support Project (co-S.U.M.)

** With 1 hour of ventilation, coronavirus can reduce by one-one hundredth (Central Disease Control Headquarters, April 21, 2020)

Distribution of “co-S.U.M.” program is part of the “Smart Ventilation Management Support Project” of the KOSHA, aiming to promote aggressive use of the program by sending a notice to over 10,000 high-risk business sites with working environments exposed to 3 risks of concentration, confinement and congestion.

✚ ✚ When a business site requests a precision assessment after learning its ventilation state to be vulnerable based on its independent assessment, experts from the KOSHA will visit the site and offer consulting (advice).

“The business sites with the 3 risks are vulnerable to relatively high risks of spreading infectious diseases, including COVID-19,” Yeon-soo Lee, the Director General of the OSHFI stated. “I truly hope that ‘co-S.U.M.’ distributed as part of the Smart Ventilation Management Support Project will be able to contribute not only improving ventilation management capabilities but also preventing infectious diseases.” Lee explained.



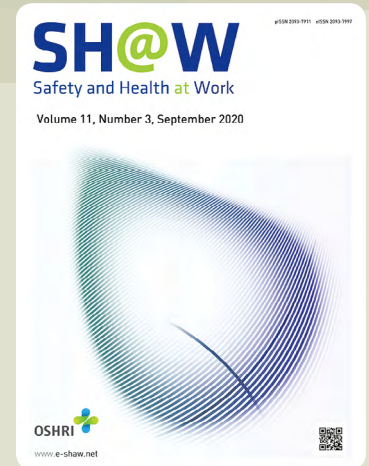
Safety and Health at Work, SH@W

OSHRI | KOSHA

「Safety and Health at Work (SH@W)」 is an international academic journal to take a proactive approach in order to create a safe and comfortable working environment for the safety and health of 'persons providing labor' at work as well as to understand the current situation of the global research trends on occupational safety and health to prevent occupational accidents.

SH@W is an open access journal¹ launched in 2010, published quarterly in English provided on international database platforms such as Web of Science (SCI), Science Direct (SCOPUS), PubMed, PubMedCentral, EMBASE, CAS and KoreaMed.

* free submission / free access · download



SH@W is actively responding to the latest issues such as COVID-19 and researches on the entire range of occupational safety and health.



Types of articles

- Editorials
- Commentaries
- Original articles
- Review articles
- Special articles
- Short communications
- Case reports
- Letter to the editor



Areas of articles

- Safety and health management and policy
- Occupational epidemiology
- Occupational safety
- Ergonomics
- Job Stress and occupational psychology
- Occupational medicine
- Occupational hygiene
- Occupational toxicology
- Occupational nursing
- Risk communication
- Law and social science



How to submit an article

- Visit the website below.
www.editorialmanager.com/E-SHAW/default.aspx
- Every process from submission to print out will be held through the website only.



For more information

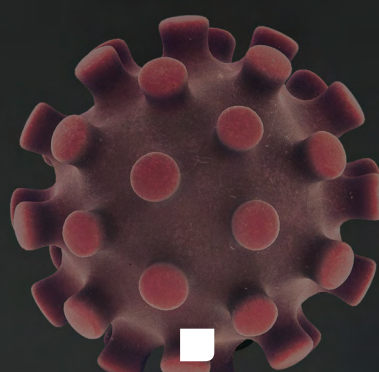
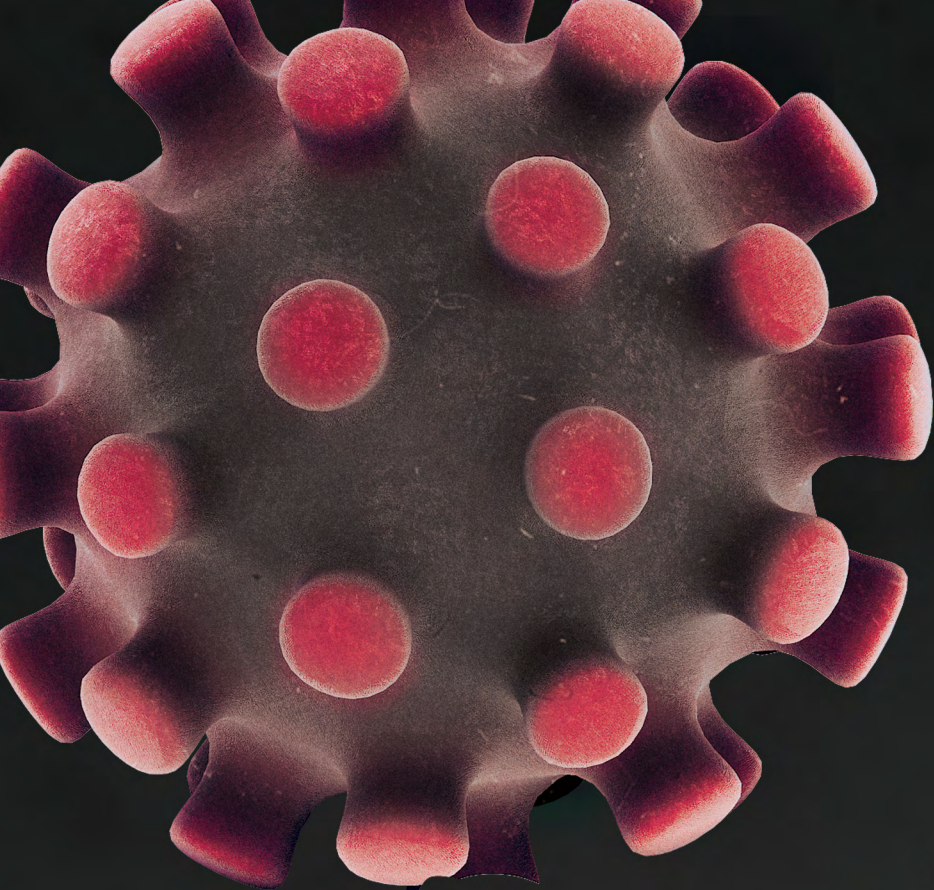
- www.e-shaw.net



Contact us

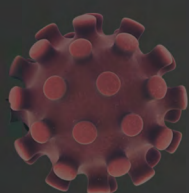
- shawedoffice@gmail.com

SH@W



Coronavirus Disease 2019

Prevention measures for COVID-19



Resources >

