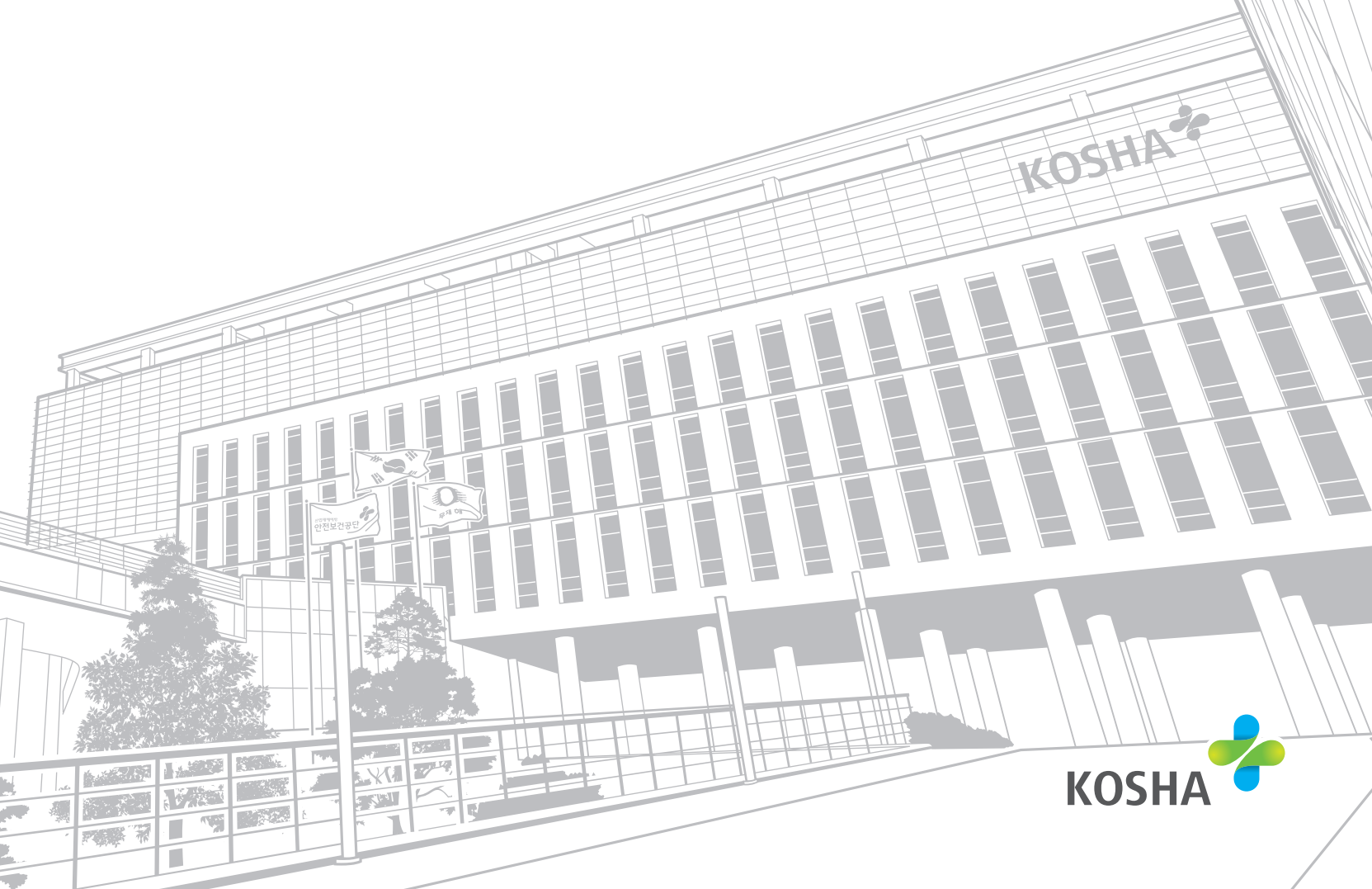


SAFETY ALWAYS

We Envision Safe Workplace
Free of Occupational Fatal
Accidents.



CONTENTS

Prologue

CEO Message	08
About KOSHA	10
Key Achievements and Goals	12
History	14

WE PROVIDE TECHNICAL SUPPORT

Technical Support-Manufacturing Industry	18
Technical Support-Construction Industry	20
Technical Support-Service Industry	22
Health Protection and Promotion	24
Financial Support	26
OSH Training	28
Development of Safety and Health Contents	30
Research on OSH Technology and Policy	32
Safety Certification-Safety Inspection	34

WE PROMOTE PREVENTION CULTURE

Partnership	38
Advancement of Safety Culture	40
Realization of Social Values	42

SAFETY ALWAYS

Workers Aspiring Their Dreams
at Workplaces
Safety, the Foremost Priority

KOSHA, a protector of workplace safety in Korea, has never ceased devoting itself to save life for all working people.

To protect workers' precious lives,
We are determined to continue fulfilling
its duties of preventing occupational
accidents through constant innovations
and challenges.

Safety is HAPPINESS

Safety is HAPPINESS

Safety represents happiness since your family as well as the society will be happy when your safety is secured at your workplace. Without safety, happiness is a mere fantasy. KOSHA guides us towards the safest way to secure happiness by means of on-site technical support, improvement of the working environment, prevention of occupational disease and health promotion activities in order to prevent occupational accidents.





Safety is PROMISE

Safety is the PROMISE

Safety is based on a promise to maintain safety throughout daily tasks even before the work starts and after it ends. A promise for your family to bring a better future by coming back home safely every day; KOSHA, the best and exemplary organization specialized in prevention of occupational accidents, hereby pledges to keep its promise with workers and their families with its quality services in safety and health.





Safety is LIFE

Safety is LIFE

Safety protects life. Once again, workers dedicate themselves at their workplaces today. Protecting safety of the workplace is based on respect for life. For the past 31 years, KOSHA has always been recognized as a reliable organization protecting human life. KOSHA is here to keep safety and life of everyone through technical development and policy studies based on its highest expertise in health and safety.





On behalf of KOSHA, we are determined to protect human life.

Needless to say, we all are living in a society while facing risks on a daily basis.

It's because risks continue increasing with an advancing economy and industry. Transportation becomes faster, buildings go up higher, and new chemicals are being manufactured even as we speak. Risks from facility and equipment are becoming further enlarged, complicated, integrated and enhanced as much as the economy and industry advances. Since risks in this risk-filled society are caused by 'structural problems' and no longer a matter of personal concerns, those problems cannot be taken care of through individual efforts. Now, the time has come where we no longer look away from such risks, declare them as structural problems and manage them on a regular basis in order for the society (governments and public enterprises) to take necessary responsibilities.

Every year, the number of workers who lost their lives at workplaces reaches approximately 2,000 where about 1,000 of them died of occupational accidents (964 fatalities in 2017). It means an average of 5 workers are killed at their workplaces every day. Consequently, the national government declared to focus on namely '3 Major Projects to Protect Public Life' aiming to reduce the number of death from suicide, traffic accidents and occupational accidents by half by the year 2022. It means that the government expressed its intent to focus on ensuring the nation is safe for everyone and to implement systematic safety management by placing it as a key national project of the highest priority. Again, then the time has come where the key government policy with the highest priority is to procure workplaces guaranteeing workers' life and safety, with the government being the control tower.

KOSHA also plans to devote all of its resources and infrastructure in order to assure 'those with authority and responsibility' to take full responsibility for occupational safety and health by designating 'fall,' 'collision' and 'suffocation' as three malignant fatal accidents, which are clearly identified by the location where the most accidents occurred, subjects for accidents and potential effectiveness to prevent accidents, based on thorough analysis on types of occupational fatal accidents. Accordingly, beginning with an exhaustive investigation into current conditions of worksites prone for fall, collision and suffocation, KOSHA is to further focus on safety and health services for the next 5 years in addition to technical and financial supports while concurrently helping those who are responsible for improving their safety awareness. Moreover, KOSHA is determined to invest all of its resources and efforts in order to warrant a safe and pleasant working environment for workers as well as to help businesses fully experiencing the actual increase of productivity through reduced occupational accidents by accomplishing our goals to lower the number of annual fatalities below 500 and the death rate in industrial accidents per ten thousand employees under 0.27 ‰ by the year 2022.

Thank you.

Du Yong Park



President
Korea Occupational Safety and Health Agency



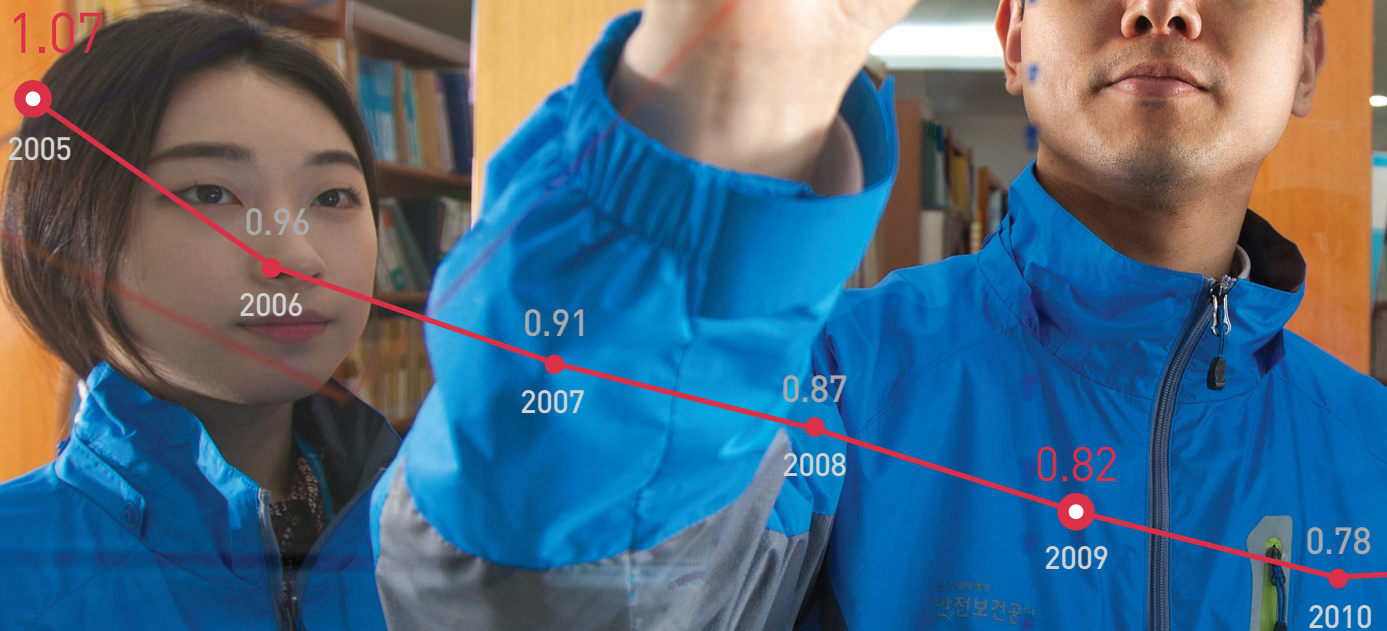
Workers' safety at the workplace is of the foremost value.

KOSHA is an expert group specialized in prevention of occupational accidents where over 1,600 professionals armed with various experiences and expertise in safety and health dedicate themselves to provide the best safety and health service available. Based on worker-oriented management, KOSHA delivers safety and health services to various worksites.





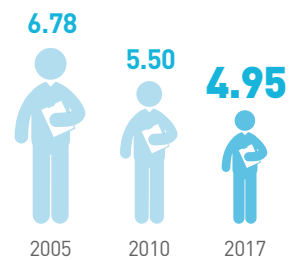
The Lowest Occupational Accident Index to Achieve Based on Superb Expertise on Safety and Health



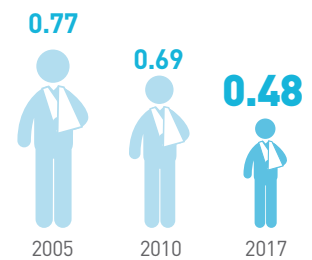


Through worksite-oriented technical supports and efficient safety management system, KOSHA continues lowering occupational accidents in Korea. Despite past successes, KOSHA sets eyes on reducing the death rate in industrial accidents per ten thousand employees down to 0.27‰ by the year 2022 through implementation of special project, 'Cut down Industrial Fatalities to Half.'

Rate in Occupational Diseases per
Ten Thousand Employees Unit: ‰



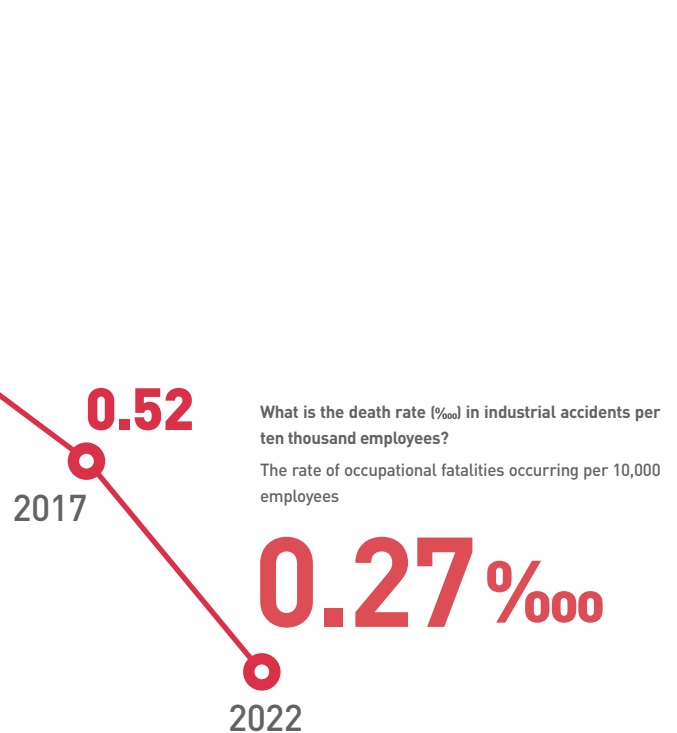
Occupational Accident Rate Unit: %



12
13

* What is the rate (‰) in occupational diseases per ten thousand employees?
The rate of occupational diseases occurring per 10,000 employees

* What is occupational accident rate (%)?
The rate of occupational accidents occurring per 100 workers



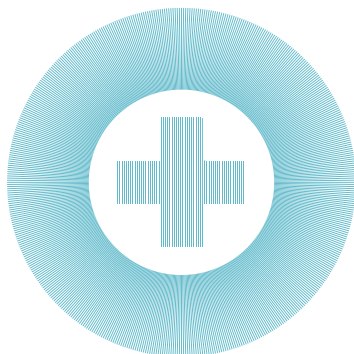


1980

1987-1989

Period of Building Foundation

- 1987 · Registration of incorporation / Occupational Safety Training Institute established
- 1989 · Occupational Safety and Health Research Institute established



1990

1990-1999

Period of Take-off and Advancement

- 1991 · Beginning of inspection service for hazardous machines/ devices
- 1993 · Pan-national Signature-collecting Drive for 10 Million People completed (signatures gathered from 10,097,609 people)
- 1994 · Distribution of low-cost and high-efficiency occupational accident prevention techniques
- 1995 · Office of Major Occupational Accident Prevention newly opened
· Safety Culture Bureau installed
- 1996 · Introduction of process safety report system
· Designation and operation of Safety Inspection Day
- 1997 · Empirical Construction Safety Training Center completed
· Industrial Chemicals Research Center established
· Introduction of S Mark Certification System
- 1998 · The 14th Annual General Meeting of Asian-Pacific Occupational Safety and Health Organization held in Seoul
- 1999 · Introduction of KOSHA 18001 Certification System

31 Years of Innovations and Challenges along with Working People

Since founded in December, 1987, the KOSHA has grown to be one of the most respected organizations specialized in prevention of occupational accidents in the world through pioneering innovations and challenges to prevent occupational accidents. We have improved systems and policies, supported safety technologies and passionately engaged in various activities to ensure safe workplaces for working people.

2000

2000-2009

2010

2010-2018

Period of Growth and Development

Period of Second Take-off

- 2001**
 - Virtual Safety Training System opened
 - Project to develop and support clean workplace launched
- 2005**
 - Major Occupational Accident Prevention Center newly established
- 2006**
 - Regional Training Information Center, Professional Engineering Bureau newly opened
- 2007**
 - The 40th Congress on Occupational Safety and Health held
 - 20th Anniversary
- 2008**
 - The 18th World Congress on Safety and Health at Work held / Seoul Declaration adopted
- 2009**
 - The agency was renamed the Korea Occupational Safety and Health Agency

- 2010**
 - Selected to Outstanding Agency from the Integrity Survey hosted by the Anti-Corruption and Civil Rights Commission (2009 and 2010)
 - Service Industry Department launched
- 2011**
 - Highest grade for quasi-government agency from the management assessment on public institutions
 - Elected to Chair Organization for Prevention Culture Department of ISSA
 - New CI Proclamation Ceremony, Abbreviated name of "KOSHA" introduced
- 2013**
 - Named to Best Agency on anti-corruption policies hosted by the Anti-Corruption and Civil Rights Commission (2009, 2010, 2011, 2012 and 2013)
 - Selected to Outstanding Agency from Customer Satisfaction Survey on Public Institutions for 2 consecutive years
- 2014**
 - Professional Engineering Oversight Bureau as well as Partnership Program Department launched
 - Headquarter moved from Incheon to Ulsan
 - Name change of Training Facility to Branch Office
- 2015**
 - Earned Class A from Customer Satisfaction Survey on Public Institutions
 - Declaration of new vision
 - Highest grade achieved for Win-Win Growth Report
 - Hosted the 31st International Congress on Occupational Health
- 2016**
 - Highest grade achieved for Win-Win Growth Report for 2 consecutive years
- 2017**
 - Occupational Safety and Health Certification Institute opened
- 2018**
 - Declaration of 'Cut down Industrial Fatalities to Half'



안전

SAFETY

WE PROVIDE TECHNICAL SUPPORT

Technical Support-Manufacturing Industry

We Plant Safety Throughout Industrial Sites

To secure safe and pleasant workplaces, KOSHA engages in a variety of occupational accident prevention activities accommodating distinct natures of manufacturing sites. KOSHA helps worksites developing autonomous capability for safety and health management through intensive supports on business types vulnerable for occupational accidents.





Systemization of safety management on forklift works

Through a survey and assessment on possession and use of forklifts, KOSHA promotes public consensus for those who with authority and responsibility to fulfill their duties of preventing accidents by encouraging systemization of safety management based on diversified management of various worksites

A System of Risk Assessment at Workplace

This is to help induce owners of manufacturing businesses (with less than 50 employees) to self-regulate and assess risk potential at their own workplace. Should they be recognized as an outstanding business in risk assessment by KOSHA, they receive a discount on their workers' compensation insurance premium.

Verification of Process Safety Reports

When equipment are installed or moved at a worksite equipped with harmful and hazardous facility prone to cause major occupational accidents, such as fire and explosion, KOSHA procures fundamental safety by examining and verifying the process safety reports prepared by business owners.

Technical Guidance for the OSH Win-Win Cooperation Program

The OSH Win-Win Cooperation Program allows both a parent company and its subcontractors to work together for workplace safety. According to this program, the former assists the latter in risk assessment, while KOSHA assists the latter in enhancing its OSH management capability.

Timely Technical Supports for Accident-prone Worksites

Should an accident occur in any workplace of the manufacturing, construction, service, transportation, storage, and communication industries, KOSHA provides technical support in a timely fashion in the way of analyzing its cause and suggesting a solution to prevent it in the future.

Certification for Safety and Health Management System [KOSHA 18001]

This system is designed for KOSHA to certify general and systemized activities of worksites continuously improving potential harmful and hazardous factors through objective assessment by implementing autonomous safety and health management systems to prevent occupational accidents and conducting risk assessment on a regular basis.



We Build Safety Throughout Construction Sites

KOSHA assists safety technologies to reduce construction accidents by construction sizes and to build a self-regulatory safety and health management environment by participating entities. A variety of activities are being implemented, including intensive guidance on the sites without work platforms (sites with defective scaffoldings) and operation of safety and health patrol.

KOSHA18001
(Support for Construction
of OSH Management
System in the
Construction Industry)

OUR WORK

Intensive Guidance on
the Sites without Work
Platforms (Sites with
Defective Scaffolding)

Supporting the OSH
Relationship between
Owner and Contractor

Operation of Safety
and Health Patrol

Support for Accident
Prevention Concerning
Construction Machinery
and Equipment

Support for Clean
Workplaces at
Construction Sites

Intensive Guidance on the Sites without Work Platforms (Sites with Defective Scaffolding)

In order to prevent fall accidents, which account for more than 50% of fatal accidents in the construction industry, KOSHA guides the industry to foster safe and pleasant working environment by promoting comprehensive installation of safe scaffolding and work platforms at construction sites through intensive inspection on the worksites yet to install work platforms and safety rails on outer scaffoldings.

Supporting the OSH Relationship between Owner and Contractor

In cases of public works, KOSHA notifies the ordering public agency and the regional government involved of the construction accident rates and takes them into account when final assessment is written up. The contracted company's accident rates are publicly announced. On the other hand, KOSHA rewards companies engaged in accident prevention activities by giving them preferential benefits.

Operation of Safety and Health Patrol

KOSHA hires and dispatches retired construction experts (retirees of 56 years old and above) to small-and-medium-sized construction sites worth less than 12 billion KRW vulnerable for safety management. These experts are making contributions to promoting compliance with safety standards through around-the-clock patrol and consultation on safety and health at construction sites.

Support for Clean Workplaces at Construction Sites

KOSHA promotes self-regulatory safety activities at small construction sites worth less than 2 billion KRW by providing financial supports for a part of lease expenses required to improve facilities with risk factors in order to prevent fall accidents.

Support for Accident Prevention Concerning Construction Machinery and Equipment

For the purpose of reducing fatal accidents related to construction machinery and equipment responsible for high fatality accident rates, KOSHA leads fostering safety culture by promoting self-regulatory safety activities jointly led by both management and labor at construction sites.

* What is defective (bad) scaffolding?

It means scaffolding vulnerable for fall accidents because safety rails and work platforms are not installed on the scaffolding; hence, in order to protect safety and life of workers, faulty scaffolding needs to be completely removed from temporary structures.



Technical Support-Service Industry

We Share Smile through Safe Service

With the growing service industry grows in Korean economy, occupational accidents also have grown. Since 2010, KOSHA established a new department dedicated to preventing occupational accidents in the service industry in order to ensure service businesses to be a safe place to work.





Prevention of Fatal Accidents in 4 Major Hazardous Works by Local Government

KOSHA implements accident prevention activities through factual survey and development of step-by-step preventive measures concerning the fields with high risks of fatal accidents, including forest/green belt organization, collection/transportation of household wastes, construction works and repair works of aging sewage pipelines, by local governments.

Technical Guidance on Occupational Accident Prevention in Service, Transportation, Warehouse and Telecommunication Industry

We provide comprehensive supports, including technical, financial supports and provision of safety and health contents, to high-risk worksites and vulnerable working groups in order to prevent occupational accidents at the worksites in service, transportation, warehouse and telecommunication industries.

Intensive Support of Accident Prevention Technology for Service Industry

KOSHA offers technical supports based on risk assessment techniques to accident-prone worksites of service industry, such as comprehensive building management business and restaurant business, by fully mobilizing relevant functional organizations.

Basic Safety Support to Prevent Accident in Service Industry

KOSHA propagates safety regulations by hazardous facilities and locations based on basic safety inspections on businesses with high industrial accident shares, such as wholesale/retail and consumer goods repair businesses with less than 50 employees.

22
23



Protect Your Health through Systematic Management

Workers' health is the cornerstone to build a healthy society and protect happy families. KOSHA continuously engages in projects preventing occupational diseases and implements systematic working environment management and health promotion activities.



Prevention of Occupational Disease from Harmful Substances

KOSHA strengthens occupational disease prevention activities by providing professional technical assistances to worksites handling harmful substances causing occupational diseases.

Vitalization of Workers' Health Promotion

We develop guidelines on occupational health designed to offer tailored responsive measures by identifying various job-related hazardous factors for health related to occupational activities and offers health management services to workers at small-sized worksites through 21 nationwide workers' health centers and 21 local branches.

Prevention of Muscular Skeletal Disease

KOSHA conducts comprehensive prevention activities, including investigation on harmful factors, ergonomic improvements and development of prevention manuals, for vulnerable working groups prone for muscular skeletal diseases.

24
25



21 Centers and **21** Branches
Information on Nationwide Workers' Health Centers and Local Branches (2017)



201,661 people
Annual Number of Workers Benefited from Nationwide Workers' Health Centers and Local Branches (2017)

Enhanced Protection for Health of Customer Reception Workers

KOSHA fulfills its role as a specialized organization through campaigns and consulting services in order to protect health of customer reception workers.



Financial Support

We Make Worksites Pleasant through Financial Supports

For small and medium-sized businesses, KOSHA runs the Clean Workplace Program and offers loans for occupational accident prevention facilities.



Grants and Loans for Small and Medium Businesses

Businesses with less than 50 employees may apply for a grant to remove harmful and hazardous factors from their construction site contracted under KRW 2 billion. Long-term, low-interest loans are also available to help them install occupational accident prevention facilities.

Subsidies for Workplace Monitoring and Medical Examinations

We offer financial supports for the costs of working environment inspection and special health examination at small-sized workplaces in order to protect workers' health from harmful factors, such as chemicals and dust, and build a pleasant working environment.

Financial Support for Costs of Workers' Health Promotion Activity

KOSHA offers financial supports for a part of costs required to promote workers' health at small-and-medium-sized workplaces (coalition), promotes voluntary health promotion activities by both management and labor, and prevents work-related diseases.



114,838 Sites

Support for Construction of Clean Workplace (2001~2017)



24,677 Sites

Loan Support (1995~2017)



68,477 Sites

Financial Support for Working Environment Inspection (2012~2017)



431,443 Workers

Financial Support for Special Health Examination (2012~2017)





OSH Training

Worksites Implementing Self-Regulatory Safety and Health Activity with Tailored Training

KOSHA develops diverse training programs and offers necessary safety and health training tailored to industrial sites. We deliver educational services aiming to improve managers' professional competency and to secure the workers' rights to safety and health.



The Owner's OSH Education Tied to Insurance Premium Discount

KOSHA offers training programs on risk assessment of worksites and responsibility to prevent occupational accidents in order to help business owners independently developing their own preventive plans against occupational accidents. Upon completing it, the owner is entitled to a discount in occupational accident insurance premium (provided that the business is in manufacturing and has less than 50 employees).

Professional Training through Occupational Safety and Health Training Institute

The Occupational Safety and Health Training Institute operates training programs to help safety and health officials, including training on statutory duties, professional and technical training, postal remote training and e-learning.

Training to Develop Safety and Health Personnel

The institute provides training programs to develop safety and health personnel to assist business owners and guide supervisors and managers. Starting on September 1, 2018, all businesses with not less than 20 but less than 50 full-time employees are required to appoint safety and health personnel to prevent occupational accidents, especially in manufacturing and forestry industries.

Safety Empirical Training

KOSHA operates personal experience programs through simulation models replicating actual worksites by establishing 6 safety empirical training centers around the nation, and virtual safety empirical training programs through 3D and VR.



632,263 People

The number of Candidates Completed Safety and Health Training at Worksites (2017)



149,969 People

The number of Candidates Completed Professional Training at OSHTI (2017)



Development of Safety and Health Contents

Safety and Health Contents Facilitating Practical Learning

We have developed our OSH contents in the hope that those working in poor conditions and vulnerable to occupational accidents are able to follow easily and put them into practice just as easily. In order to accommodate fast-changing media environment, we have also made them available in Smartphone apps and VR contents.





Teaching Plan (PPT) **382**



Audio-Visual
(Video/Animation) **356**



Booklet and Leaflet **2,570**



Smart Phone
(QR Contents/Applications)



5 Types of Empirical VR's
200 Types for Information
Purpose



KOSHA APP

A Wide Variety of OSH Contents

KOSHA develops and distributes various contents necessary for occupational prevention activities at worksites by industries and business types.

The OSH Contents Specifically Aimed at Those Vulnerable to Occupational Accidents

We produce and distribute learning materials and posters in 16 different foreign languages, such as Chinese, Indonesian and Vietnamese, in order to prevent occupational accidents for vulnerable workers and migrant workers easily exposed to occupational accidents.

Realistic Contents through VR Developed and Distributed

Effectiveness and quality of training has been greatly improved due to worksite-oriented realistic contents displaying safety and health information through 360° panoramic images

* Scheduled to develop empirical contents (25 types) and information contents (1,000 types) by 2023

Delivery of Media to Worksites (<http://media.kosha.or.kr>)

KOSHA offers customer-tailored services where customers can easily order media necessary for their workplaces, such as posters and labels (stickers) via internet and receive them in just 2 to 3 days.

30
31



Research on OSH Technology and Policy

We Bring Better Future through Researches on OSH Technology and Policy

Armed with the best manpower and experiment equipment on safety and health in Korea, KOSHA conducts researches on policies and systems in order to implement fundamental prevention of accidental disasters.



Research on OSH

KOSHA performs researches on policy-making and improvement of systems to respond to changes in industries, economy, society and working environment, and analyzes engineering causes for primal prevention of accidental disasters.

Research on Working Environment

Assessment of harmful factors prone to occur under work environment and research on improvement of the working environment

Research on Occupational Health and Harmfulness-risk of Chemicals

Epidemiological study on occupational disease, research on protection of workers' health, research on harmful/carcinogenic chemicals, and research on test of fire/explosive characteristics.

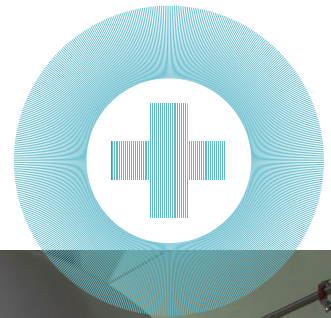


Safety Certification-Safety Inspection

We Promote Stability at Industrial Sites through Safety Certification and Safety Inspection

KOSHA performs comprehensive inspections on safety performance, manufacturers' technical capability and manufacturing system of machinery/equipment/facility harmful to industrial sites as well as safety devices/protective gear, affixes safety certification mark on safety-proof products and helps producing, distributing and using those products.

At the same time, we ensure the use of safety-proof products only by conducting safety inspection whether safety performance of harmful/dangerous machine conforms to safety inspection standards.



Safety Certification (K Mark)

When machinery/equipment subject to safety certification is manufactured or imported, the Minister of Employment and Labor certifies the subjects after conducting comprehensive examination whether safety performance of the products from the manufacturing phase, manufacturers' technical competence and manufacturing system comply with safety certification standards.

Self-Regulatory Safety Examination Report (K Mark)

Those who manufacture and import machine/equipment subject to self-regulatory safety examination are required to verify if safety performance of those products conforms to self-regulatory safety standards and report to the Minister of Employment and Labor.

Safety Certification (S Mark)

This system is designed to examine safety and reliability of products, which are not machine/device subject to safety certification and quality control system of manufacturers for the purpose of safe design and production of those products. We subsequently approve the use of safety certification label (S Mark) when the products conforms to safety certification standards.

Safety Inspection

Safety inspection prevents accidents which may occur during the use of harmful/hazardous machine by verifying whether the machine in question conforms to inspection standards concerning safety performance prescribed by the Minister of Employment and Labor.

Quality Assessment Show on Protective Device/Gear

It is aimed to encourage production of quality products by identifying and promoting outstanding protective device and gear to contribute to prevention of occupational accidents.





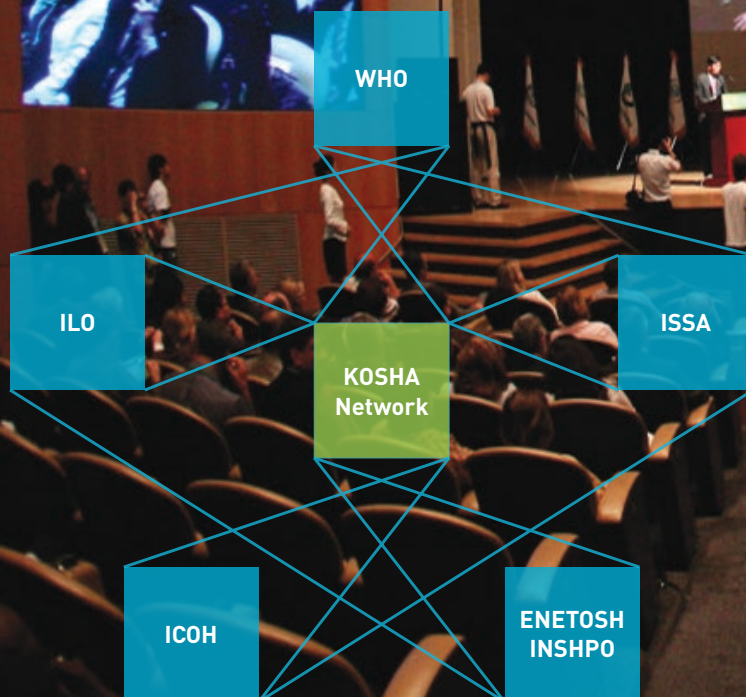
WE PROMOTE
PREVENTION CULTURE



Partnership

Safer and Happier Society through Partnership

KOSHA broadens the realm of occupational accident prevention activities by building close ties with various institutions and agencies both in Korea and overseas. We recently further strengthen cooperation with private sector through integration and implementation of private-contracted projects, and elevate its own reputation as a world-class organization by vitalizing international exchanges and cooperation.



A world-renowned agency specialized in prevention of occupational accidents

KOSHA continues strengthening its presence in the global community as a world-class professional organization specialized in prevention of occupational accidents. We have concluded agreements on technical cooperation to improve occupational accident prevention technologies, promote proliferation of accident prevention culture and share experiences and knowledge in occupational safety and health with Asian-Pacific nations.

* Inter-agency Exchange with Institutions in Korea and Overseas (2017)



375 agencies

Interagency Business Agreements (2017)



206 agencies

Cooperation with Private Accident Prevention Organizations (2017)



52 cases in **27** countries

Technical Cooperation with Overseas Professional Agencies



Advancement of Safety Culture

Safety-Oriented Society through Practice of Safety Culture

It is to build a safety-oriented society by improving keen senses to identify risks from workplaces and daily lives and promoting practices of safety culture. Through campaigns inspiring safety culture and safety culture projects together with customers, KOSHA helps to elevate public awareness on safety and health through pan-national safety culture promotion.



Occupational
Safety and Health
Awareness Week



Support for
Zero-Accident
Movements
at Workplaces



Pan-National Safety
Culture Promotion

OUR WORK



Tailored Public Relation
Efforts for Proliferation
of Safety Consensus



Enhanced Two-Way
Communication
Using New Media



OSH Awareness Week

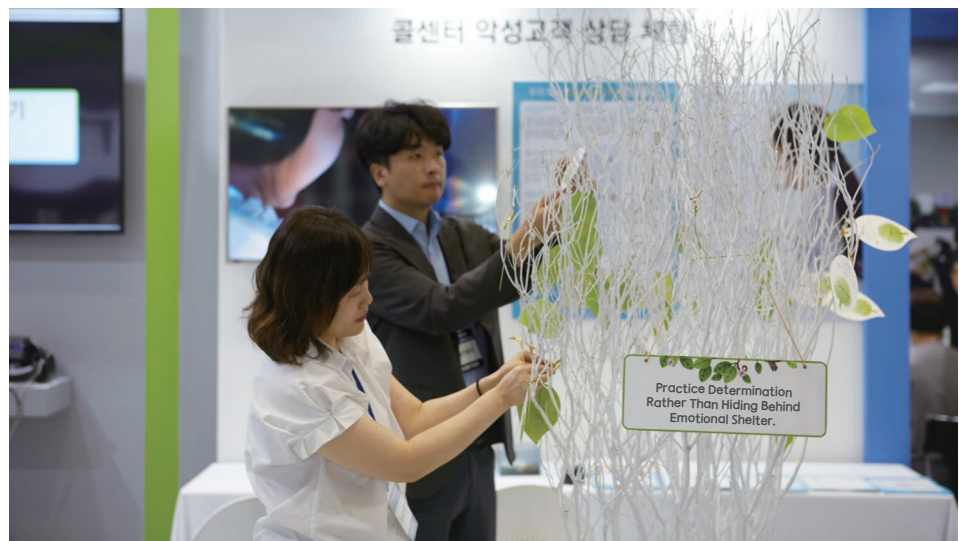
KOSHA designated the first week of every July to be the 'OSH Awareness Week' to raise social awareness on safety by hosting ceremonial events, various seminars and international exhibitions open to the public.

Tailored Public Relation Efforts for Proliferation of Safety Consensus

KOSHA delivers and spreads safety messages by fully utilizing various media outlets, such as broadcasting, publication, outdoor advertising and online media. Especially, developing cultural contents of webtoons and theatrical plays, we also engage in promotional activities that accommodate general public interests.



40
41



Realization of Social Values

Safe Journey with Everyone Building Happy Community Together

Determined to fulfill social responsibility as a public corporation, KOSHA endeavors enhancing safety culture and helping underprivileged neighbors. We keep working hard to make the world better place to live through its transparent management and cooperation with small businesses.



Proliferation of Caring Culture

With full support and blessings from all employees, KOSHA deducts 0.2% from employees' paychecks to raise the funds for a Caring Culture, and presents scholarships to children of occupational accident victims every year.

Safety Companionship

With the community service system for each facility by each department, We pay visits to welfare facilities for physically disabled people or child breadwinners. Also using its professional skills, we conduct safety inspections on all of those facilities.

Startup of New Safety Technology

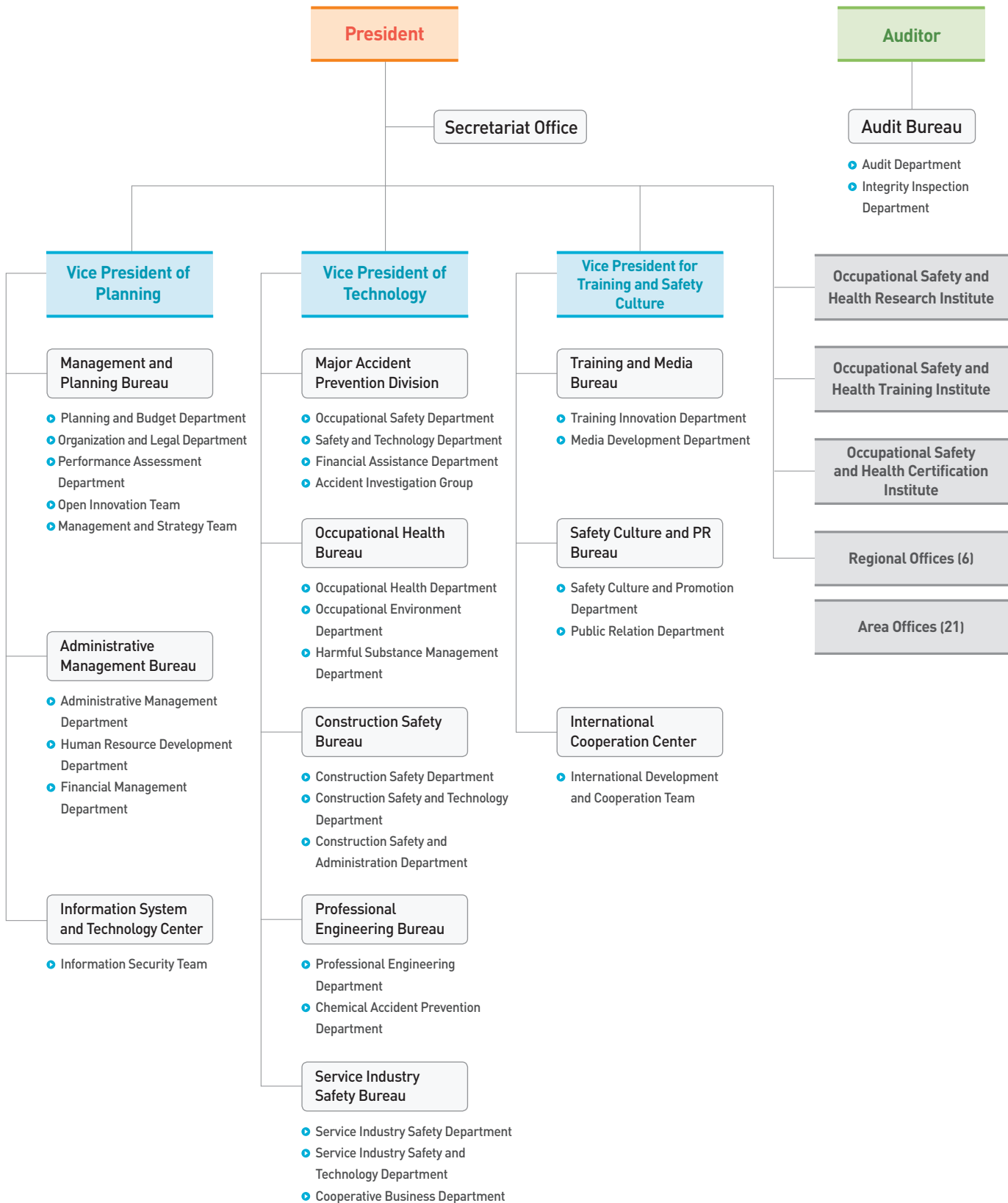
KOSHA contributes to creating new innovative jobs by identifying promising startups equipped with new safety technologies and supporting them to be successful.

Training on Safety Consensus

Maximizing vast field experiences, educational know-how and educational facilities, KOSHA plans to build an open campus focusing on practical training for the purpose of developing future talents in the Ulsan region under the mission to expanding social values.



Organization Chart



KOSHA Network

Headquarters of Korea Occupational Safety and Health Agency (KOSHA)

Occupational Safety and Health Research Institute (OSHRI)
Occupational Safety and Health Training Institute (OSHTI)
Occupational Safety and Health Certification Institute (OSHCI)
 400, Jongga-ro, Jung-gu, Ulsan, Korea

Seoul Regional Office

7th Flr., 8 Beodeunaru-ro 2-gil,
 Yeongdeungpo-gu, Seoul, Korea

Seoul Northern Area Office

7th Flr., Woori Bldg., 42, Chilpae-ro, Jung-gu,
 Seoul, Korea

Gangwon Area Office

2nd Flr., The Korean Teachers' Credit Union
 Bldg., 2370, Gyeongchun-ro, Chuncheon-si,
 Gangwon-do, Korea

Gangwon Eastern Area Office

3th Flr., Jeongwan Bldg., 182, Haseulla-ro,
 Gangneung-si, Gangwon-do, Korea

Busan Regional Office

26, Jungang-daero 1763beon-gil, Geumjeong-gu,
 Busan, Korea

Ulsan Area Office

(2nd & 4th Flr.) 83, Jeongdong-ro, Nam-gu,
 Ulsan, Korea

Gyeongnam Area Office

259, Jungang-daero, Uichang-gu, Changwon-si,
 Gyeongsangnam-do, Korea

Gyeongnam Eastern Area Office

4th Flr., Yangsan Labor Complex
 51, Namyangsan 2-gil, Dong-myeon,
 Yangsan-si, Gyeongsangnam-do, Korea

Gwangju Regional Office

8th, 9th & 11th Flr., Gwangju International Trade
 Association 282, Mujin-daero, Gwangsan-gu,
 Gwangju, Korea

Jeonbuk Area Office

4th Flr., Government Complex of Ministry of
 Employment and Labor 251, Geonsan-ro,
 Deokjin-gu, Jeonju-si, Jeollabuk-do, Korea

Jeonbuk Western Area Office

2nd Flr., Cheongsan-dong, Gunsan Free Trade
 Zone Office 482, Jayu-ro, Gunsan-si, Jeollabuk-
 do, Korea

Jeonnam Eastern Area Office

35, Museonjungang-ro, Yeosu-si,
 Jeollanam-do, Korea

Jeonnam Area Office

7th Flr., Jeonnam Development Corporation Bldg.,
 242, Hugwang-daero, Samhyang-eup,
 Muan-gun, Jeollanam-do, Korea

Jeju Area Office

4th Flr., Jeju Business Agency
 473, Yeonsam-ro, Jeju-si, Jeju-do, Korea

Central Regional Office

478-1, Munemi-ro, Bupyeong-gu,
 Incheon, Korea

Gyeonggi Area Office

10th & 13th Flr., Gyeonggido Business & Science
 Accelerator 107, Gwanggyo-ro, Yeongtong-gu,
 Suwon-si, Gyeonggi-do, Korea

Gyeonggi Northern Area Office

1st Flr., Gyeonggi Northern Chamber of
 Commerce & Industry 140, Chudong-ro,
 Uijeongbu-si, Gyeonggi-do, Korea

Gyeonggi Western Area Office

2nd Flr., JL Convention Wedding Hall
 230, Gwangdeok 4-ro, Danwon-gu, Ansan-si,
 Gyeonggi-do, Korea

Gyeonggi Eastern Area Office

2nd Flr., Sogok Hall 3, Soetgol-ro 17beon-gil,
 Bundang-gu, Seongnam-si, Gyeonggi-do, Korea

Gyeonggi Central Area Office

3th Flr., Daeshin Plaza 19, Songnae-daero
 265beon-gil, Bucheon-si, Gyeonggi-do, Korea

Daegu Regional Office

19th Flr., Hosu Bldg., 648, Gukchaebosang-ro,
 Jung-gu, Daegu, Korea

Daegu Western Area Office

5th Flr., Seongan Bldg., 1834, Dalgubeol-daero,
 Dalseo-gu, Daegu, Korea

Gyeongbuk Eastern Area Office

402, Posco-daero, Nam-gu, Pohang-si,
 Gyeongsangbuk-do, Korea

Gyeongbuk Northern Area Office

312-23, 3gongdan 1-ro, Gumi-si,
 Gyeongsangbuk-do, Korea

Daejeon Regional Office

3th Flr., 60, Expo-ro 339beon-gil, Yuseong-gu,
 Daejeon, Korea

Chungbuk Area Office

3rd Flr., KT Bldg., 20, Gagyeong-ro 161beon-gil,
 Heungdeok-gu, Cheongju-si, Chungcheongbuk-
 do, Korea

Chungnam Area Office

3rd Flr., Chungcheongnam-do Business
 Supprot Center 215, Gwangjang-ro, Seobuk-gu,
 Cheonan-si, Chungcheongnam-do, Korea

Safety and Health;
Our efforts to build workplaces filled
with dreams and hopes represent
the love for those who thrive for happiness.
Safe workplace, healthy workers,
and happy Korea

